

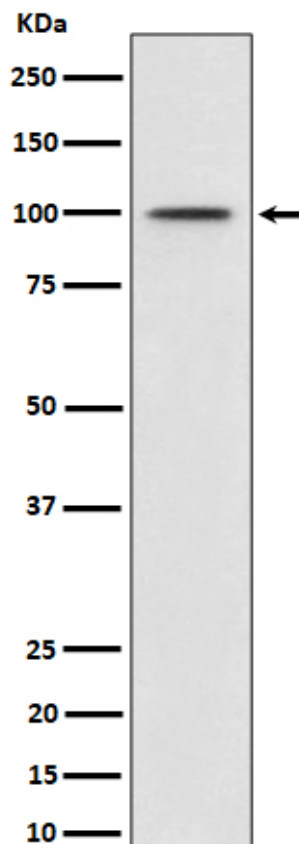
## Basic Information

<b>Product Name</b>	Anti-MDM2 (Phospho-S166) Antibody (Clone#29M35)	
<b>Gene Name</b>	MDM2	
<b>Source</b>	Rabbit	
<b>Clonality</b>	Monoclonal	
<b>Isotype</b>	IgG	
<b>Species Reactivity</b>	human	
<b>Tested Application</b>	WB, IHC, ICC/IF	
<b>Contents</b>	500 ug/ml; Rabbit IgG in phosphate buffered saline, pH 7.4, 150mM NaCl, 0.02% sodium azide, 0.4-0.5 mg/ml BSA and 50% glycerol.	
<b>Immunogen</b>	A synthesized peptide derived from human Phospho-MDM2 (S166)	
<b>Concentration</b>	500 ug/ml	
<b>Purification</b>	Affinity-chromatography	
<b>Observed MW</b>	90-100 kDa	
<b>Dilution Ratios</b>	Western blot (WB): 1:500-2000 Immunohistochemistry (IHC): 1:50-200 Immunocytochemistry/Immunofluorescence (ICC/IF): 1:50-200	

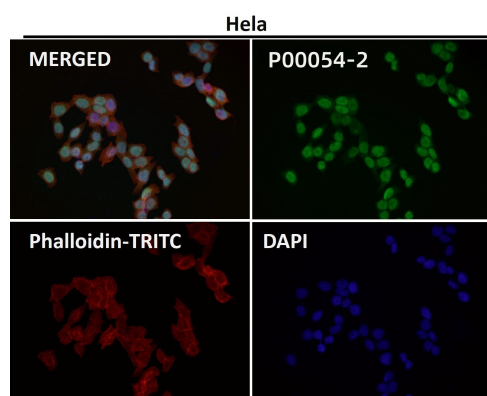
## Storage

12 months from date of receipt, -20°C as supplied. 6 months 2 to 8°C after reconstitution. Avoid repeated freezing and thawing.

## Selected Validation Data



Western blot analysis of Phospho-MDM2 (S166) expression in MCF7 cell treated with IGF-1 lysate.



Immunofluorescent analysis using the Antibody.