

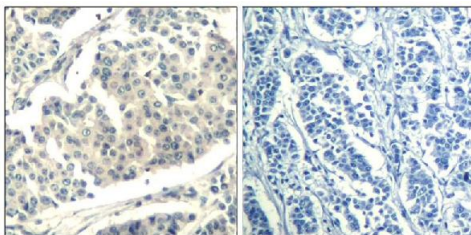
Basic Information

Product Name	Anti-ABL1/2 (Phospho-Tyr393/439) Antibody
Gene Name	ABL1/ABL2
Source	Rabbit
Clonality	Polyclonal
Isotype	IgG
Species Reactivity	human, mouse
Tested Application	WB, IHC, IF
Contents	Supplied at 1.0mg/mL in phosphate buffered saline (without Mg ²⁺ and Ca ²⁺), pH 7.4, 150mM NaCl, 0.02% sodium azide and 50% glycerol.
Immunogen	Peptide sequence around phosphorylation site of tyrosine 393/439 (D-T-Y (p)-T-A) derived from Human ABL1/2.
Concentration	0.5-1mg/ml, actual concentration vary by lot. Use suggested dilution ratio to decide dilution procedure.
Purification	Immunogen affinity purified
Dilution Ratios	WB, 1:500-1:1000 IHC, 1:50-1:100 Immunofluorescence, 1:100-1:200

Storage

Store at -20°C for one year. For short term storage and frequent use, store at 4°C for up to one month. Avoid repeated freeze-thaw cycles.

Selected Validation Data



Immunohistochemical analysis of paraffin-embedded human breast carcinoma tissue using ABL1/2(Phospho-Tyr393/439) antibody P00133(left) or the same antibody preincubated with blocking peptide(right).

Product datasheet

Anti-ABL1/2 (Phospho-Tyr393/439)

Antibody

Catalog Number: P00133

BOSTER

antibody and ELISA experts

BOSTER BIOLOGICAL TECHNOLOGY

Building C21, 3rd and 4th floors, Optics Valley Biomedical Accelerator,
Wuhan East Lake High-tech Development Zone

Web: www.boster.com **Phone:** 027-67845390 **Email:** boster@boster.com