

Basic Information

Product Name	Anti-c-Cbl/CBL (Phospho-S669) Antibody (Clone#28C46)
Gene Name	CBL
Source	Rabbit
Clonality	Monoclonal
Isotype	IgG
Species Reactivity	human, mouse, rat
Tested Application	WB
Contents	500 ug/ml; Rabbit IgG in phosphate buffered saline, pH 7.4, 150mM NaCl, 0.02% sodium azide, 0.4-0.5 mg/ml BSA and 50% glycerol.
Immunogen	A synthesized peptide derived from human Phospho-CBL (S669)
Concentration	500 ug/ml
Purification	Affinity-chromatography
Observed MW	120 kDa
Dilution Ratios	Western blot (WB):1:500-2000

Storage

12 months from date of receipt, -20°C as supplied. 6 months 2 to 8°C after reconstitution. Avoid repeated freezing and thawing.

Selected Validation Data

Product datasheet

Anti-c-Cbl/CBL (Phospho-S669)

Antibody (Clone#28C46)

Catalog Number: P00152-1

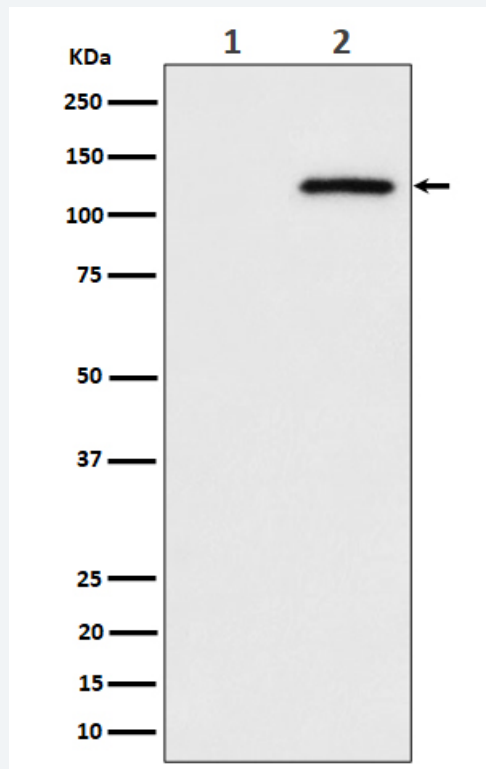
BOSTER

antibody and ELISA experts

BOSTER BIOLOGICAL TECHNOLOGY

Building C21, 3rd and 4th floors, Optics Valley Biomedical Accelerator,
Wuhan East Lake High-tech Development Zone

Web: www.boster.com **Phone:** 027-67845390 **Email:** boster@boster.com



Western blot analysis of Phospho-CBL (S669) expression in (1) HeLa cell lysate; (2) HeLa cell treated with pervanadate lysate.