

Basic Information

Product Name	Anti-MLKL (Phospho-S345) Antibody (Clone#27M64)
Gene Name	MLKL
Source	Rabbit
Clonality	Monoclonal
Isotype	IgG
Species Reactivity	mouse
Tested Application	WB, IP
Contents	500 ug/ml; Rabbit IgG in phosphate buffered saline, pH 7.4, 150mM NaCl, 0.02% sodium azide, 0.4-0.5 mg/ml BSA and 50% glycerol.
Immunogen	A synthesized peptide derived from mouse Phospho-MLKL (S345)
Concentration	500 ug/ml
Purification	Affinity-chromatography
Observed MW	54 kDa
Dilution Ratios	Western blot (WB): 1:500-2000 ImmunoPrecipitation (IP):1:50

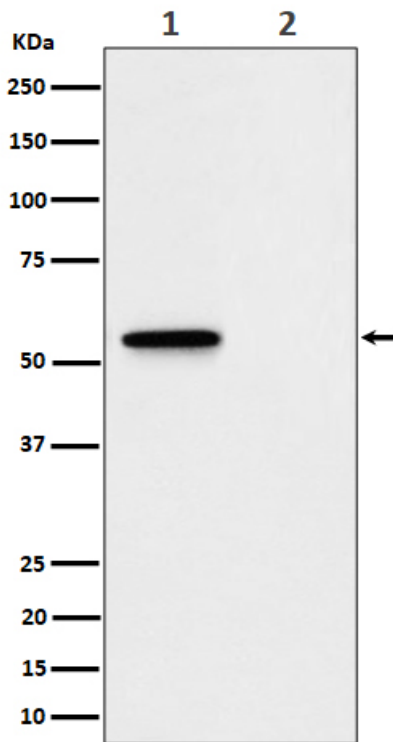
Storage

12 months from date of receipt, -20°C as supplied.

Reference

Anti-MLKL (Phospho-S345) Antibody (Clone#27M64)被引用在1文献中。

Selected Validation Data



Western blot analysis of Phospho-MLKL (S345) expression in (1) L929 treated with Z-VAD + TNF alpha + SM164 cell lysate; (2) Untreated.