

Basic Information

| | | |
|---------------------------|--|--|
| Product Name | Anti-Beta Catenin/CTNNB1 Antibody | |
| Gene Name | CTNNB1 | |
| Source | Rabbit | |
| Clonality | Polyclonal | |
| Isotype | IgG | |
| Species Reactivity | human, mouse, rat | |
| Tested Application | WB,IHC,ICC/IF | |
| Contents | 500 ug/ml antibody with PBS, 0.02% NaN ₃ , 1 mg/ml BSA and 50% glycerol. | |
| Immunogen | A synthetic peptide corresponding to a sequence at the C-terminus of human beta Catenin, identical to the related rat and mouse sequences. | |
| Concentration | 500 ug/ml | |
| Observed MW | 95 kDa | |
| Dilution Ratios | Western blot (WB): 1:500-2000 Immunohistochemistry (IHC): 1:50-400 Immunocytochemistry/Immunofluorescence (ICC/IF): 1:50-400 (Boiling the paraffin sections in 10mM citrate buffer,pH6.0,or PH8.0 EDTA repair liquid for 20 mins is required for the staining of formalin/paraffin sections.) Optimal working dilutions must be determined by end user. | |

Storage

12 months from date of receipt, -20°C as supplied. 6 months 2 to 8°C after reconstitution. Avoid repeated freezing and thawing.

Background Information

Catenins are proteins found in complexes with cadherin cell adhesion molecules of animal cells. The first two catenins that were identified became known as alpha-catenin and beta-catenin. Alpha-catenin can bind to beta-catenin and can also bind actin. Beta-catenin binds the cytoplasmic domain of some cadherins. Beta-catenin is an adherens junction protein. It plays an important role in various aspects of liver biology including liver development(both embryonic and postnatal), liver regeneration following partial hepatectomy. HGF-induced hepatomegaly, liver zonation, and pathogenesis of liver cancer.

Product datasheet

Anti-Beta Catenin/CTNNB1 Antibody

Catalog Number: PA1212

BOSTER

antibody and ELISA experts

BOSTER BIOLOGICAL TECHNOLOGY

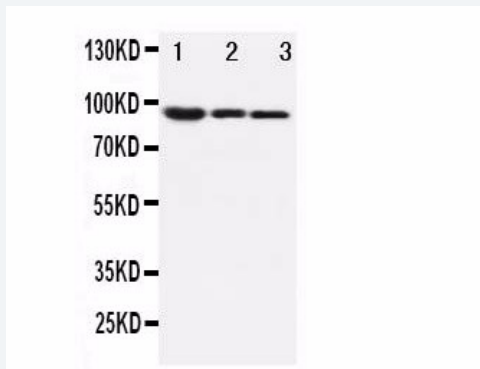
Building C21, 3rd and 4th floors, Optics Valley Biomedical Accelerator,
Wuhan East Lake High-tech Development Zone

Web: www.boster.com Phone: 027-67845390 Email: boster@boster.com

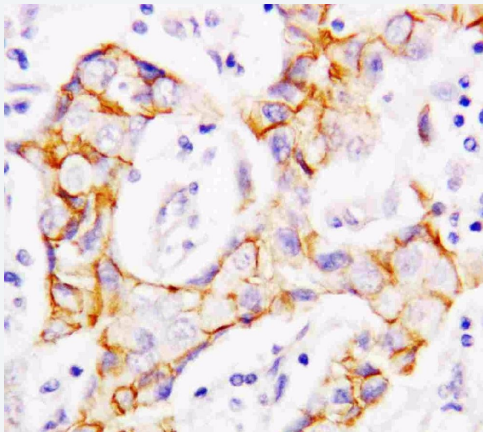
Reference

Anti-Beta Catenin/CTNNB1 Antibody 被引用在13文献中。

Selected Validation Data



Anti-beta Catenin antibody, PA1212, Western blotting Lane 1: MM453 Cell Lysate Lane 2: MCF-7 Cell Lysate Lane 3: HELA Cell Lysate



Anti-beta Catenin antibody, PA1212, IHC(P) IHC(P): Human Mammary Cancer Tissue

Product datasheet

Anti-Beta Catenin/CTNNB1 Antibody

Catalog Number: **PA1212**

BOSTER

antibody and ELISA experts

BOSTER BIOLOGICAL TECHNOLOGY

Building C21, 3rd and 4th floors, Optics Valley Biomedical Accelerator,
Wuhan East Lake High-tech Development Zone

Web: www.boster.com **Phone:** 027-67845390 **Email:** boster@boster.com

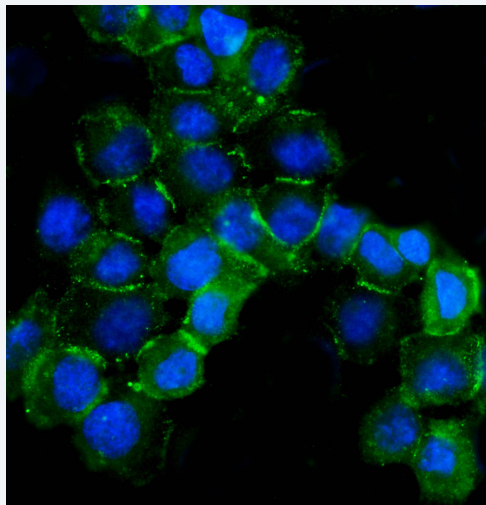


Figure 4. ICC analysis using anti- CTNNB1 antibody (PA1212). was detected in immersion fixed A431 cell line. Cells were stained using the Dylight488-conjugated Anti-rabbit IgG Secondary Antibody (green)(Catalog # BA1127) and counterstained with DAPI (blue).