

Basic Information

Product Name	Anti-Claudin 5/CLDN5 Antibody
Gene Name	CLDN5
Source	Rabbit
Clonality	Polyclonal
Isotype	IgG
Species Reactivity	human, rat
Tested Application	WB
Contents	500 ug/ml antibody with PBS, 0.02% NaN ₃ , 1 mg/ml BSA and 50% glycerol.
Immunogen	A synthetic peptide corresponding to a sequence at the C-terminus of human Claudin 5, different from the related mouse sequence by three amino acids and from the related rat sequence by four amino acids.
Concentration	500 ug/ml
Purification	Immunogen affinity purified.
Observed MW	23 kDa
Dilution Ratios	Western blot (WB):1:500-2000

Storage

12 months from date of receipt, -20°C as supplied. 6 months 2 to 8°C after reconstitution. Avoid repeated freezing and thawing.

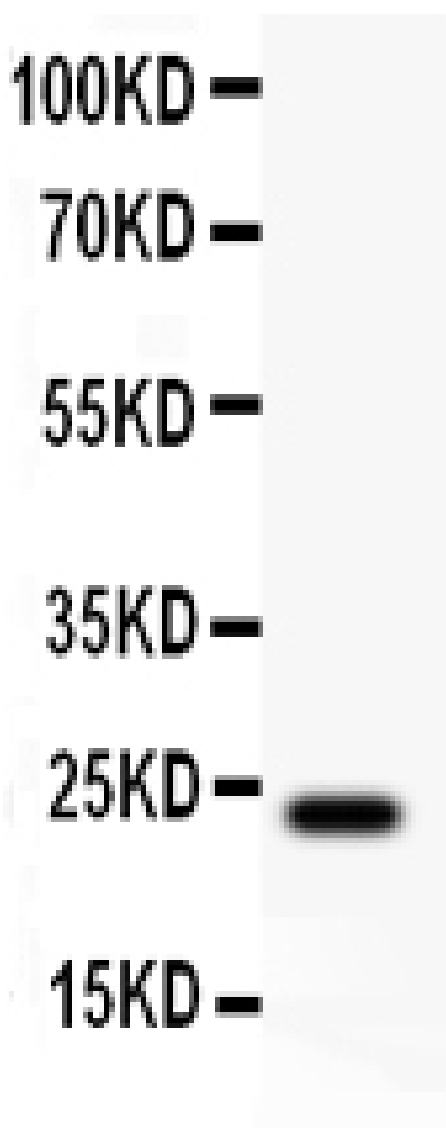
Background Information

Claudin-5 (CLDN5) also known as BEC1, is a protein that in humans is encoded by the CLDN5 gene. By use of yeast artificial chromosomes, Claudin-5 is localized between polymorphic markers D22S944 and D22S941 on chromosome 22q11, both of which are deleted in more than 80% of VCFS patients. This gene encodes a member of the claudin family. Claudins are integral membrane proteins and components of tight junction strands. Tight junction strands serve as a physical barrier to prevent solutes and water from passing freely through the paracellular space between epithelial or endothelial cell sheets. What's more, it plays a major role in tight junction-specific obliteration of the intercellular space.

Reference

Anti-Claudin 5/CLDN5 Antibody 被引用在5文献中。

Selected Validation Data



Western blot analysis of Claudin 5/CLDN5 using anti-Claudin

5/CLDN5 antibody (PB0123). The sample well of each lane was loaded with 30 ug of sample under reducing conditions.

Lane 1: Rat liver tissue lysates.

After electrophoresis, proteins were transferred to a membrane.

Then the membrane was incubated with rabbit anti-Claudin 5/CLDN5 antigen affinity purified polyclonal antibody (PB0123) at a dilution of 1:1000 and probed with a goat anti-rabbit IgG-HRP secondary antibody (Catalog # BA1054). The signal is developed using ECL Plus Western Blotting Substrate (Catalog # AR1197). A specific band was detected for Claudin 5/CLDN5 at approximately 23 kDa. The expected band size for Claudin 5/CLDN5 is at 23 kDa.