

Basic Information

Product Name	Anti-P glycoprotein/ABCB1 Antibody
Gene Name	ABCB1
Source	Rabbit
Clonality	Polyclonal
Isotype	IgG
Species Reactivity	human, mouse, rat
Tested Application	IHC
Contents	500 ug/ml antibody with PBS, 0.02% NaN ₃ , 1 mg/ml BSA and 50% glycerol.
Immunogen	A synthetic peptide corresponding to a sequence in the middle region of human P Glycoprotein, different from the related rat sequence by twelve amino acids.
Concentration	500 ug/ml
Purification	Immunogen affinity purified.
Dilution Ratios	Immunohistochemistry (IHC): 1:50-400 (Boiling the paraffin sections in 10mM citrate buffer,pH6.0,or PH8.0 EDTA repair liquid for 20 mins is required for the staining of formalin/paraffin sections.) Optimal working dilutions must be determined by end user.

Storage

12 months from date of receipt, -20°C as supplied.

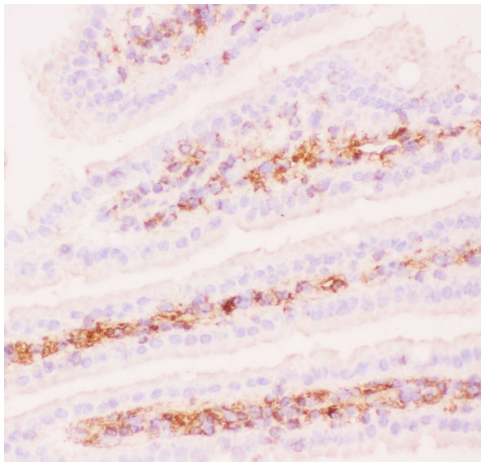
Background Information

P-GP, also called ABCB1 or PGY1, is a glycoprotein that in humans is encoded by the ABCB1 gene. It is mapped to 7q21.12. P-GP is a well-characterized ABC-transporter (which transports a wide variety of substrates across extra- and intracellular membranes) of the MDR/TAP subfamily. It is an important protein of the cell membrane that pumps many foreign substances out of cells. More formally, it is an ATP-dependent drug efflux pump with broad substrate specificity. P-GP is an ATP-dependent drug efflux pump for xenobiotic compounds with broad substrate specificity. It is responsible for decreased drug accumulation in multidrug-resistant cells and often mediates the development of resistance to anticancer drugs. This protein also functions as a transporter in the blood-brain barrier.

Reference

Anti-P glycoprotein/ABCB1 Antibody被引用在4文献中。

Selected Validation Data



IHC analysis of P glycoprotein/ABCB1 using anti-P glycoprotein/ABCB1 antibody (PB0162).

P glycoprotein/ABCB1 was detected in frozen section of mouse intestine tissue. The tissue section was incubated with rabbit anti-P glycoprotein/ABCB1 Antibody (PB0162) at a dilution of 1:200 and developed using HRP Conjugated Rabbit IgG Super Vision Assay Kit (Catalog # SV0002) with DAB (Catalog # AR1027) as the chromogen.