

Basic Information

Product Name	Anti-MT1-MMP/MMP14 Antibody
Gene Name	MMP14
Source	Rabbit
Clonality	Polyclonal
Isotype	IgG
Species Reactivity	human, mouse, rat
Tested Application	WB
Contents	500 ug/ml antibody with PBS, 0.02% NaN ₃ , 1 mg/ml BSA and 50% glycerol.
Immunogen	A synthetic peptide corresponding to a sequence at the C-terminus of human MMP14 different from the related mouse and rat sequences by one amino acid.
Concentration	500 ug/ml
Purification	Immunogen affinity purified.
Observed MW	60-65 kDa
Dilution Ratios	Western blot (WB):1:500-2000

Storage

12 months from date of receipt, -20°C as supplied.

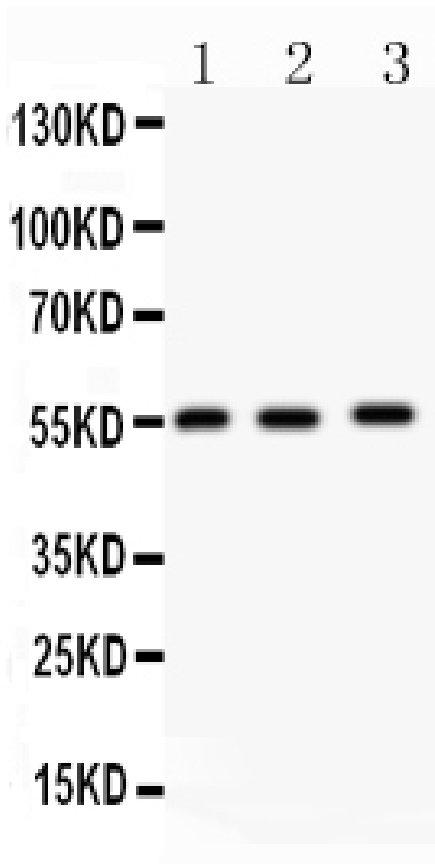
Background Information

Matrix metalloproteinase-14, also called MT-MMP 1, is an enzyme that in humans is encoded by the MMP14 gene. The protein encoded by this gene is a member of the membrane-type MMP subfamily. This gene is mapped to 14q11.2. Proteins of the matrix metalloproteinase (MMP) family are involved in the breakdown of extracellular matrix in normal physiological processes, such as embryonic development, reproduction, and tissue remodeling, as well as in disease processes, such as arthritis and metastasis. This gene may be involved in actin cytoskeleton reorganization by cleaving PTK7. It acts as a positive regulator of cell growth and migration via activation of MMP15.

Reference

Anti-MT1-MMP/MMP14 Antibody被引用在5文献中。

Selected Validation Data



Western blot analysis of MT1-MMP/MMP14 using anti-MT1-MMP/MMP14 antibody (PB0315). The sample well of each lane was loaded with 30 ug of sample under reducing conditions.

Lane 1: Human Placenta tissue lysates,

Lane 2: HELA whole cell lysates,

Lane 3: U87 whole cell lysates.

After electrophoresis, proteins were transferred to a membrane. Then the membrane was incubated with rabbit anti-MT1-MMP/MMP14 antigen affinity purified polyclonal antibody (PB0315) at a dilution of 1:1000 and probed with a goat anti-rabbit IgG-HRP secondary antibody (Catalog # BA1054). The signal is developed using ECL Plus Western Blotting Substrate (Catalog # AR1197). A specific band was detected for MT1-MMP/MMP14 at approximately 60-65 kDa. The expected band size for MT1-MMP/MMP14 is at 66 kDa.