

## Basic Information

|                    |   |  |
|--------------------|---|--|
| Product Name       | Anti-PKC Alpha/PRKCA Antibody   |  |
| Gene Name          | PRKCA   |  |
| Source             | Rabbit  |  |
| Clonality          | Polyclonal  |  |
| Isotype            | IgG   |  |
| Species Reactivity | human, mouse, rat   |  |
| Tested Application | WB, IHC   |  |
| Contents           | 500 ug/ml antibody with PBS, 0.02% NaN <sub>3</sub> , 1 mg/ml BSA and 50% glycerol.   |  |
| Immunogen          | E.coli-derived human PKC alpha recombinant protein (Position: M153-L342). Human PKC alpha shares 97% and 99% amino acid (aa) sequence identity with mouse and rat PKC alpha, respectively.  |  |
| Concentration      | 500 ug/ml   |  |
| Purification       | Immunogen affinity purified.  |  |
| Observed MW        | 77 kDa  |  |
| Dilution Ratios    | Western blot (WB): 1:500-2000<br>Immunohistochemistry (IHC): 1:50-400<br>(Boiling the paraffin sections in 10mM citrate buffer, pH6.0, or PH8.0 EDTA repair liquid for 20 mins is required for the staining of formalin/paraffin sections.) Optimal working dilutions must be determined by end user. |  |

## Storage

12 months from date of receipt, -20°C as supplied.

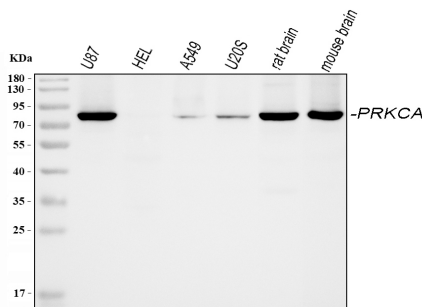
## Background Information

Protein kinase C (PKC) is the major phorbol ester receptor. Activation of PKC by calcium ions and the second messenger diacylglycerol is thought to play a central role in the induction of cellular responses to a variety of ligand-receptor systems and in the regulation of cellular responsiveness to external stimuli. Three of these, termed alpha, beta and gamma, are highly homologous. PRKCA1 is mapped to 17q22-q23.2. PRKCA1 regulates cardiac contractility and propensity toward heart failure.

## Reference

Anti-PKC Alpha/PRKCA Antibody被引用在17文献中。

## Selected Validation Data



Western blot analysis of PKC Alpha/PRKCA using anti-PKC Alpha/PRKCA antibody (PB0354). The sample well of each lane was loaded with 30 ug of sample under reducing conditions.

Lane 1: U87 whole cell lysates,

Lane 2: HEL whole cell lysates,

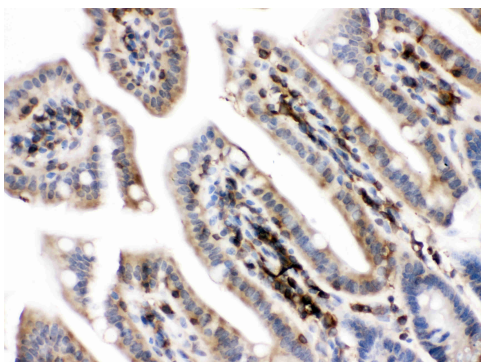
Lane 3: A549 whole cell lysates,

Lane 4: U2OS whole cell lysates,

Lane 5: rat brain tissue lysates,

Lane 6: mouse brain tissue lysates.

After electrophoresis, proteins were transferred to a membrane. Then the membrane was incubated with rabbit anti-PKC Alpha/PRKCA antigen affinity purified polyclonal antibody (PB0354) at a dilution of 1:1000 and probed with a goat anti-rabbit IgG-HRP secondary antibody (Catalog # BA1054). The signal is developed using ECL Plus Western Blotting Substrate (Catalog # AR1197). A specific band was detected for PKC Alpha/PRKCA at approximately 77 kDa. The expected band size for PKC Alpha/PRKCA is at 77 kDa.



IHC analysis of PKC Alpha/PRKCA using anti-PKC Alpha/PRKCA antibody (PB0354).

PKC Alpha/PRKCA was detected in a paraffin-embedded section of mouse intestine tissue. Biotinylated goat anti-rabbit IgG was used as secondary antibody. The tissue section was incubated with rabbit anti-PKC Alpha/PRKCA Antibody (PB0354) at a dilution of 1:200 and developed using Streptavidin-Biotin-Complex (SABC) (Catalog # SA1022) with DAB (Catalog # AR1027) as the chromogen.