

Basic Information

Product Name	Anti-HPSE Antibody
Gene Name	HPSE
Source	Rabbit
Clonality	Polyclonal
Isotype	IgG
Species Reactivity	human, mouse, rat
Tested Application	WB
Contents	500 ug/ml antibody with PBS, 0.02% NaN ₃ , 1 mg/ml BSA and 50% glycerol.
Immunogen	A synthetic peptide corresponding to a sequence in the middle region of human Heparanase 1 different from the related mouse and rat sequences by eight amino acids.
Concentration	500 ug/ml
Purification	Immunogen affinity purified.
Observed MW	65 kDa
Dilution Ratios	Western blot (WB):1:500-2000

Storage

12 months from date of receipt, -20°C as supplied.

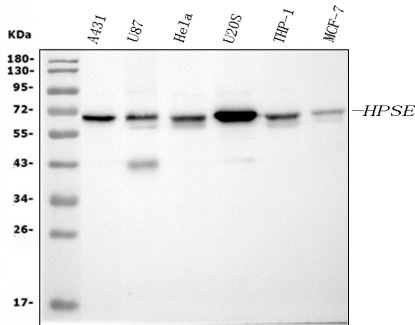
Background Information

Heparanase, also known as HPSE, is an enzyme that acts both at the cell-surface and within the extracellular matrix to degrade polymeric heparan sulfate molecules into shorter chain length oligosaccharides. Heparanase is an endo-beta-D-glucuronidase capable of cleaving heparan sulfate and has been implicated in inflammation and tumor angiogenesis and metastasis. The successful penetration of the endothelial cell layer that lines the interior surface of blood vessels is an important process in the formation of blood borne tumour metastases. Heparan sulfate proteoglycans are major constituents of this layer and it has been shown that increased metastatic potential corresponds with increased heparanase activity for a number of cell lines.

Reference

Anti-HPSE Antibody被引用在12文献中。

Selected Validation Data



Western blot analysis of HPSE using anti-HPSE antibody (PB0405). The sample well of each lane was loaded with 30 ug of sample under reducing conditions.

Lane 1: A431 whole cell lysates,
Lane 2: U87 whole cell lysates,
Lane 3: HELA whole cell lysates,
Lane 4: U2OS whole cell lysates,
Lane 5: THP-1 whole cell lysates,
Lane 6: MCF-7 whole cell lysates.

After electrophoresis, proteins were transferred to a membrane. Then the membrane was incubated with rabbit anti-HPSE antigen affinity purified polyclonal antibody (PB0405) at a dilution of 1:1000 and probed with a goat anti-rabbit IgG-HRP secondary antibody (Catalog # BA1054). The signal is developed using ECL Plus Western Blotting Substrate (Catalog # AR1197). A specific band was detected for HPSE at approximately 65 kDa. The expected band size for HPSE is at 61 kDa.