

## Basic Information

Product Name	Anti-SMAD3 Antibody
Gene Name	SMAD3
Source	Rabbit
Clonality	Polyclonal
Isotype	IgG
Species Reactivity	human, mouse, rat
Tested Application	WB
Contents	500 ug/ml antibody with PBS, 0.02% NaN <sub>3</sub> , 1 mg/ml BSA and 50% glycerol.
Immunogen	A synthetic peptide corresponding to a sequence in the middle region of human Smad3 identical to the related mouse and rat sequences.
Concentration	500 ug/ml
Purification	Immunogen affinity purified.
Observed MW	58 kDa
Dilution Ratios	Western blot (WB):1:500-2000

## Storage

12 months from date of receipt, -20°C as supplied.

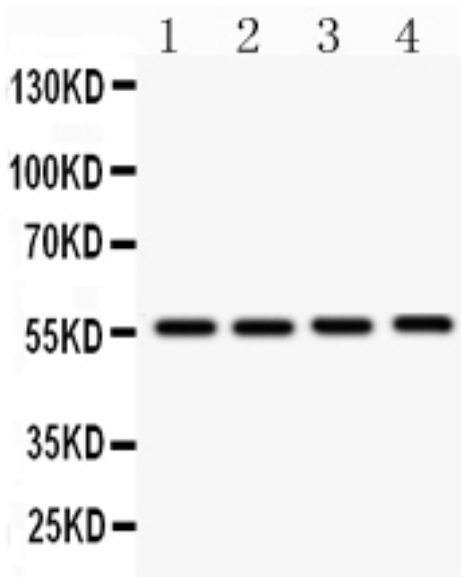
## Background Information

Mothers against decapentaplegic homolog 3 also known as SMAD family member 3 or SMAD3 is a protein that in humans is encoded by the SMAD3 gene. SMAD3 is a member of the SMAD family of proteins. It is located in 15q22.33. And it mediates the signals from the transforming growth factor beta (TGF-β) super family ligands that regulate cell proliferation, differentiation and death. Based on its essential role in TGF beta signaling pathway, SMAD3 has been related with tumor growth in cancer development.

## Reference

Anti-SMAD3 Antibody被引用在8文献中。

## Selected Validation Data



Western blot analysis of SMAD3 using anti-SMAD3 antibody (PB0445). The sample well of each lane was loaded with 30 ug of sample under reducing conditions.

Lane 1: U87 whole cell lysates,

Lane 2: Human Placenta tissue lysates,

Lane 3: PANC whole cell lysates,

Lane 4: HELA whole cell lysates.

After electrophoresis, proteins were transferred to a membrane. Then the membrane was incubated with rabbit anti-SMAD3 antigen affinity purified polyclonal antibody (PB0445) at a dilution of 1:1000 and probed with a goat anti-rabbit IgG-HRP secondary antibody (Catalog # BA1054). The signal is developed using ECL Plus Western Blotting Substrate (Catalog # AR1197). A specific band was detected for SMAD3 at approximately 58 kDa. The expected band size for SMAD3 is at 48 kDa.