

## Basic Information

Product Name	Anti-Eotaxin/CCL11 Antibody	
Gene Name	CCL11	
Source	Rabbit	
Clonality	Polyclonal	
Isotype	IgG	
Species Reactivity	human, mouse, rat	
Tested Application	WB, IHC, ELISA	
Contents	500 ug/ml antibody with PBS, 0.02% NaN <sub>3</sub> , 1 mg/ml BSA and 50% glycerol.	
Immunogen	E. coli-derived human Eotaxin recombinant protein (Position: G24-P97). Human Eotaxin shares 61.6% and 63% amino acid (aa) sequence identity with mouse and rat Eotaxin, respectively.	
Concentration	500 ug/ml	
Purification	Immunogen affinity purified.	
Observed MW	11 kDa	
Dilution Ratios	Western blot (WB): 1:500-2000 Immunohistochemistry (IHC): 1:50-400 Enzyme linked immunosorbent assay (ELISA): 1:100-1000 (Boiling the paraffin sections in 10mM citrate buffer,pH6.0,or PH8.0 EDTA repair liquid for 20 mins is required for the staining of formalin/paraffin sections.) Optimal working dilutions must be determined by end user.	

## Storage

12 months from date of receipt, -20°C as supplied.

## Background Information

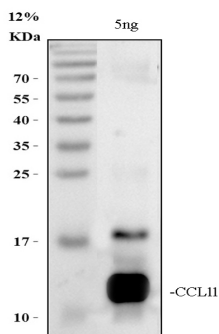
CCL11 (Chemokine (C-C motif) ligand 11), also known as Eotaxin, is a small cytokine belonging to the CC chemokine family. Eotaxin selectively recruits eosinophils by inducing their chemotaxis, and therefore, is implicated in allergic responses. The effects of Eotaxin are mediated by its binding to a G-protein-linked receptor known as a chemokine receptor. Chemokine receptors for which Eotaxin is a ligand include CCR2, CCR3 and CCR5. However, it has been found that eotaxin-1 (CCL11) has high degree selectivity for its receptor, such that they are inactive on neutrophils and monocytes, which do not express CCR3. The gene for human Eotaxin is encoded on three exons and is located on chromosome 17q12.

## Reference

Anti-Eotaxin/CCL11 Antibody 被引用在1文献中。

## Selected Validation Data

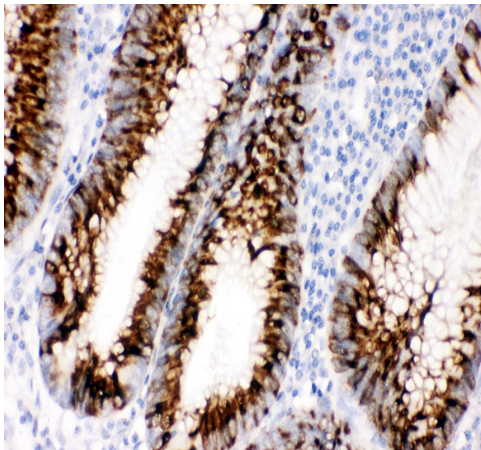
human CCL11 recombinant protein



Western blot analysis of Eotaxin/CCL11 using anti-Eotaxin/CCL11 antibody (PB0613).

Lane 1: recombinant human Eotaxin/CCL11 protein 5 ng.

After electrophoresis, proteins were transferred to a membrane. Then the membrane was incubated with rabbit anti-Eotaxin/CCL11 antigen affinity purified polyclonal antibody (PB0613) at a dilution of 1:1000 and probed with a goat anti-rabbit IgG-HRP secondary antibody (Catalog # BA1054). The signal is developed using ECL Plus Western Blotting Substrate (Catalog # AR1197). A specific band was detected for Eotaxin/CCL11 at approximately 11 kDa.



IHC analysis of Eotaxin/CCL11 using anti-Eotaxin/CCL11 antibody (PB0613).

Eotaxin/CCL11 was detected in a paraffin-embedded section of human colon cancer tissue. The tissue section was incubated with rabbit anti-Eotaxin/CCL11 Antibody (PB0613) at a dilution of 1:200 and developed using HRP Conjugated Rabbit IgG Super Vision Assay Kit (Catalog # SV0002) with DAB (Catalog # AR1027) as the chromogen.