

Basic Information

| | | |
|---------------------------|---|--|
| Product Name | Anti-ADRP/Perilipin 2/PLIN2 Antibody | |
| Gene Name | PLIN2 | |
| Source | Rabbit | |
| Clonality | Polyclonal | |
| Isotype | IgG | |
| Species Reactivity | human, mouse, rat | |
| Tested Application | WB, IHC | |
| Contents | 500 ug/ml antibody with PBS, 0.02% NaN ₃ , 1 mg/ml BSA and 50% glycerol. | |
| Immunogen | E. coli-derived human ADFP recombinant protein (Position: K226-Q418). Human ADFP shares 88.4% amino acid (aa) sequence identity with mouse ADFP. | |
| Concentration | 500 ug/ml | |
| Purification | Immunogen affinity purified. | |
| Observed MW | 48 kDa | |
| Dilution Ratios | Western blot (WB): 1:500-2000 Immunohistochemistry (IHC): 1:50-400 (Boiling the paraffin sections in 10mM citrate buffer, pH6.0, or PH8.0 EDTA repair liquid for 20 mins is required for the staining of formalin/paraffin sections.) Optimal working dilutions must be determined by end user. | |

Storage

12 months from date of receipt, -20°C as supplied.

Background Information

Adipose differentiation-related protein, also known as perilipin 2 (PLIN2), ADRP or adipophilin, is a protein which in humans is encoded by the ADFP gene. The protein encoded by this gene belongs to the perilipin family, members of which coat intracellular lipid storage droplets. This protein is associated with the lipid globule surface membrane material, and maybe involved in development and maintenance of adipose tissue. However, it is not restricted to adipocytes as previously thought, but is found in a wide range of cultured cell lines, including fibroblasts, endothelial and epithelial cells, and tissues, such as lactating mammary gland, adrenal cortex, Sertoli and Leydig cells, and hepatocytes in alcoholic liver cirrhosis, suggesting that it may serve as a marker of lipid accumulation in diverse cell types and diseases. Alternatively spliced transcript variants have been found for this gene.

Reference

Anti-ADRP/Perilipin 2/PLIN2 Antibody被引用在1文献中。

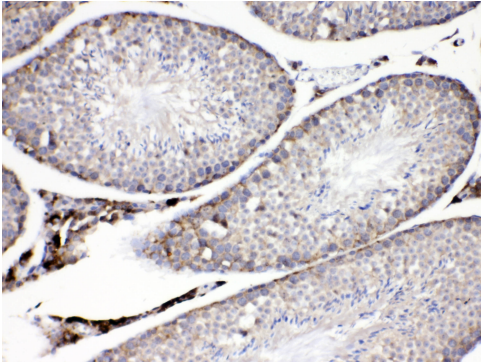
Selected Validation Data



Western blot analysis of ADRP/Perilipin 2/PLIN2 using anti-ADRP/Perilipin 2/PLIN2 antibody (PB10083). The sample well of each lane was loaded with 30 ug of sample under reducing conditions.

Lane 1: human MCF-7 whole cell lysates.

After electrophoresis, proteins were transferred to a membrane. Then the membrane was incubated with rabbit anti-ADRP/Perilipin 2/PLIN2 antigen affinity purified polyclonal antibody (PB10083) at a dilution of 1:1000 and probed with a goat anti-rabbit IgG-HRP secondary antibody (Catalog # BA1054). The signal is developed using ECL Plus Western Blotting Substrate (Catalog # AR1197). A specific band was detected for ADRP/Perilipin 2/PLIN2 at approximately 48 kDa. The expected band size for ADRP/Perilipin 2/PLIN2 is at 48 kDa.



IHC analysis of ADRP/Perilipin 2/PLIN2 using anti-ADRP/Perilipin 2/PLIN2 antibody (PB10083).

ADRP/Perilipin 2/PLIN2 was detected in a paraffin-embedded section of mouse testis tissue. Biotinylated goat anti-rabbit IgG was used as secondary antibody. The tissue section was incubated with rabbit anti-ADRP/Perilipin 2/PLIN2 Antibody (PB10083) at a dilution of 1:200 and developed using Streptavidin-Biotin-Complex (SABC) (Catalog # SA1022) with DAB (Catalog # AR1027) as the chromogen.