

Basic Information

Product Name	Anti-Integrin Beta 1/ITGB1 Antibody	
Gene Name	ITGB1	
Source	Rabbit	
Clonality	Polyclonal	
Isotype	IgG	
Species Reactivity	human, rat	
Tested Application	WB, IHC	
Contents	500 ug/ml antibody with PBS, 0.02% NaN3, 1 mg/ml BSA and 50% glycerol.	
Immunogen	E.coli-derived human ITGB1 recombinant protein (Position: N527-D728). Human ITGB1 shares 91% and 88% amino acid (aa) sequences identity with mouse and rat ITGB1, respectively.	
Concentration	500 ug/ml	
Purification	Immunogen affinity purified.	
Observed MW	120-130 kDa	
Dilution Ratios	Western blot (WB): 1:500-2000 Immunohistochemistry (IHC): 1:50-400 (Boiling the paraffin sections in 10mM citrate buffer,pH6.0,or PH8.0 EDTA repair liquid for 20 mins is required for the staining of formalin/paraffin sections.) Optimal working dilutions must be determined by end user.	

Storage

12 months from date of receipt, -20°C as supplied.

Background Information

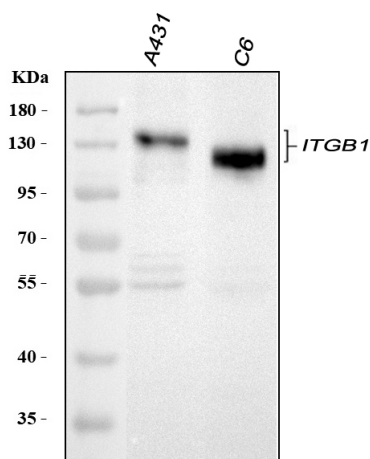
Integrin beta-1, also known as CD29, is a protein that in humans is encoded by the ITGB1 gene. CD29 is an integrin unit associated with very late antigen receptors. It is known to conjoin with alpha-3 subunit to create alpha3beta1 complex that reacts to such molecules as netrin-1 and reelin. This gene contains a beta subunit that appears to be analogous to band-3 of integrin. It is mapped to 10p11.22. It is found that FER mediates crosstalk between CDH2 and CD29. Integrin family members are membrane receptors involved in cell adhesion and recognition in a variety of processes including embryogenesis, hemostasis, tissue repair, immune response and metastatic diffusion of tumor cells. The protein

encoded by this gene is a beta subunit.

Reference

Anti-Integrin Beta 1/ITGB1 Antibody被引用在6文献中。

Selected Validation Data

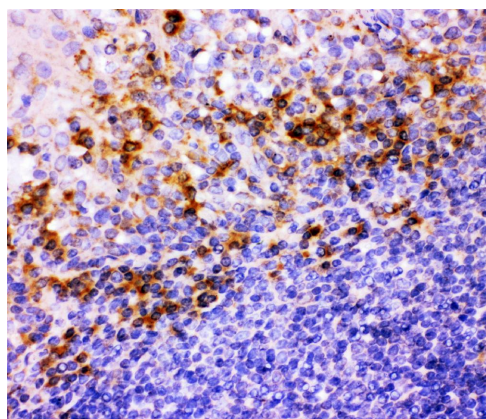


Western blot analysis of anti- ITGB1 antibody (PB9086). The sample well of each lane was loaded with 30ug of sample under reducing conditions.

Lane 1: human A431 whole cell lysates,

Lane 2: rat C6 whole cell lysates.

Use rabbit anti- ITGB1 1:1000, probed with a goat anti-rabbit IgG-HRP secondary antibody. The signal is developed using an Enhanced Chemiluminescent detection (ECL) kit (Catalog#EK1002). A specific band was detected for ITGB1 at approximately 120-130KD. The expected band size for ITGB1 is at 88KD.



IHC analysis of Integrin Beta 1/ITGB1 using anti-Integrin Beta 1/ITGB1 antibody (PB9086).

Integrin Beta 1/ITGB1 was detected in a paraffin-embedded section of human tonsil tissue. Biotinylated goat anti-rabbit IgG was used as secondary antibody. The tissue section was incubated with rabbit anti-Integrin Beta 1/ITGB1 Antibody (PB9086) at a dilution of 1:200 and developed using Streptavidin-Biotin-Complex (SABC) (Catalog # SA1022) with DAB (Catalog # AR1027) as the chromogen.