

Basic Information

Product Name	Anti-HIF-1 alpha/HIF1A Antibody	
Gene Name	HIF1A	
Source	Rabbit	
Clonality	Polyclonal	
Isotype	IgG	
Species Reactivity	human, mouse, rat	
Tested Application	WB, IHC	
Contents	500 ug/ml antibody with PBS, 0.02% NaN ₃ , 1 mg/ml BSA and 50% glycerol.	
Immunogen	A synthetic peptide corresponding to a sequence at the C-terminal of human HIF-1-alpha, different from the related mouse and rat sequences by three amino acids.	
Concentration	500 ug/ml	
Purification	Immunogen affinity purified.	
Observed MW	120 kDa	
Dilution Ratios	Western blot (WB): 1:500-2000 Immunohistochemistry (IHC): 1:50-400 (Boiling the paraffin sections in 10mM citrate buffer, pH6.0, or PH8.0 EDTA repair liquid for 20 mins is required for the staining of formalin/paraffin sections.) Optimal working dilutions must be determined by end user.	

Storage

12 months from date of receipt, -20°C as supplied. 6 months 2 to 8°C after reconstitution. Avoid repeated freezing and thawing.

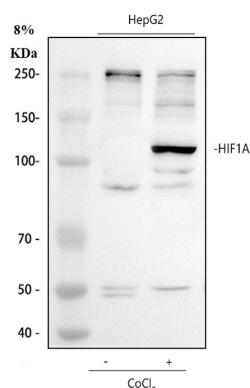
Background Information

HIF-1 α (Hypoxia-inducible factor 1 α , HIF1A) is a transcription factor that mediates cellular and systemic homeostatic responses to reduced O₂ availability in mammals, including angiogenesis, erythropoiesis and glycolysis. This gene was mapped to 14q21-q24. HIF-1 α transactivate genes required for energy metabolism and tissue perfusion and is necessary for embryonic development and tumor explant growth. HIF-1 α is over expressed during carcinogenesis, myocardial infarction and wound healing. It is crucial for the cellular response to hypoxia and is frequently over expressed in human cancers, resulting in the activation of genes essential for cell survival. HIF-1 α regulates the survival and function in the inflammatory microenvironment directly. It is a transcription factor that plays a pivotal role in cellular adaptation to changes in oxygen availability.

Reference

Anti-HIF-1 alpha/HIF1A Antibody被引用在68文献中。

Selected Validation Data



Western blot analysis of HIF-1 alpha/HIF1A using anti-HIF-1 alpha/HIF1A antibody (PB9253). The sample well of each lane was loaded with 30 ug of sample under reducing conditions.

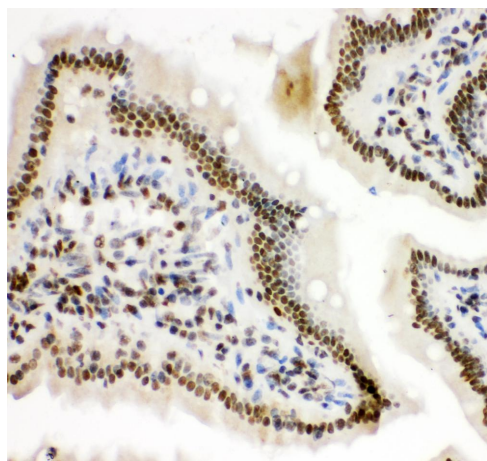
Lane 1: Untreated human HepG2 whole cell lysates,

Lane 2: Cobalt Chloride treated human HepG2 whole cell lysates.

After electrophoresis, proteins were transferred to a membrane.

Then the membrane was incubated with rabbit anti-HIF-1 alpha/HIF1A antigen affinity purified polyclonal antibody (PB9253) at a dilution of 1:1000 and probed with a goat anti-rabbit IgG-HRP

secondary antibody (Catalog # BA1054). The signal is developed using ECL Plus Western Blotting Substrate (Catalog # AR1197). A specific band was detected for HIF-1 alpha/HIF1A at approximately 120 kDa. The expected band size for HIF-1 alpha/HIF1A is at 93 kDa.



IHC analysis of HIF-1 alpha/HIF1A using anti-HIF-1 alpha/HIF1A antibody (PB9253).

HIF-1 alpha/HIF1A was detected in a paraffin-embedded section of mouse intestine tissue. Biotinylated goat anti-rabbit IgG was used as secondary antibody. The tissue section was incubated with rabbit anti-HIF-1 alpha/HIF1A Antibody (PB9253) at a dilution of 1:200 and developed using Streptavidin-Biotin-Complex (SABC) (Catalog # SA1022) with DAB (Catalog # AR1027) as the chromogen.

Product datasheet

Anti-HIF-1 alpha/HIF1A Antibody

Catalog Number: **PB9253**



antibody and ELISA experts

BOSTER BIOLOGICAL TECHNOLOGY

Building C21, 3rd to 5th Floors, Optics Valley Biopharmaceutical Accelerator,
East Lake High-Tech Development Zone, Wuhan.

Web: www.boster.com **Phone:** 027-67845390/1/2 **Email:** boster@boster.com