

## Basic Information

<b>Product Name</b>	Anti-CPT1B Antibody	
<b>Gene Name</b>	CPT1B	
<b>Source</b>	Rabbit	
<b>Clonality</b>	Polyclonal	
<b>Isotype</b>	IgG	
<b>Species Reactivity</b>	mouse, rat	
<b>Tested Application</b>	WB, IF, IHC	
<b>Contents</b>	500 ug/ml antibody with PBS, 0.02% NaN <sub>3</sub> , 1 mg/ml BSA and 50% glycerol.	
<b>Immunogen</b>	A synthetic peptide corresponding to a sequence at the N-terminus of human CPT1B, different from the related mouse sequence by two amino acids, and from the related rat sequence by four amino acids.	
<b>Concentration</b>	500 ug/ml	
<b>Purification</b>	Immunogen affinity purified.	
<b>Observed MW</b>	88 kDa	
<b>Dilution Ratios</b>	Western blot (WB): 1:500-2000 Immunohistochemistry (IHC): 1:50-400 Immunofluorescence (IF): 1:50-400 (Boiling the paraffin sections in 10mM citrate buffer, pH6.0, or PH8.0 EDTA repair liquid for 20 mins is required for the staining of formalin/paraffin sections.) Optimal working dilutions must be determined by end user.	

## Storage

12 months from date of receipt, -20°C as supplied.

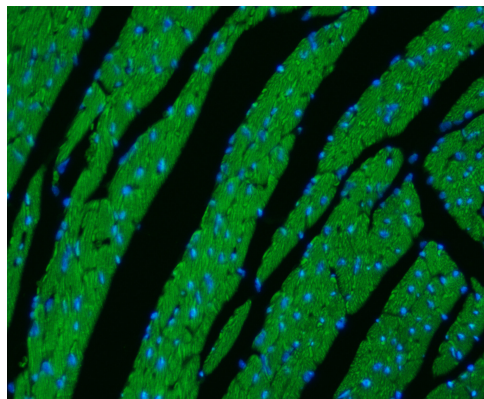
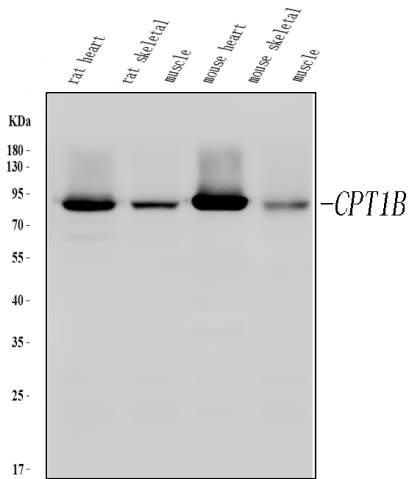
## Background Information

CPT1B is located on 22q13.33. The protein encoded by this gene, a member of the carnitine/ choline acetyltransferase family, is the rate-controlling enzyme of the long-chain fatty acid beta-oxidation pathway in muscle mitochondria. This enzyme is required for the net transport of long-chain fatty acyl-CoAs from the cytoplasm into the mitochondria. Multiple transcript variants encoding different isoforms have been found for this gene, and read-through transcripts are expressed from the upstream locus that include exons from this gene.

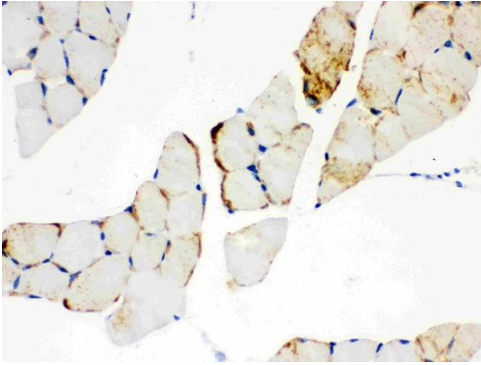
## Reference

Anti-CPT1B Antibody 被引用在4文献中。

## Selected Validation Data



IF analysis using anti- CPT1B Antibody (PB9491). detected in paraffin-embedded section of mouse cardiac tissue. The tissue section were stained using the Dylight488-conjugated Anti-rabbit IgG Secondary Antibody (green) (Catalog # BA1127) and counterstained with DAPI (blue).



IHC analysis of CPT1B using anti-CPT1B antibody (PB9491).

CPT1B was detected in a paraffin-embedded section of mouse skeletal muscle tissue. Biotinylated goat anti-rabbit IgG was used as secondary antibody. The tissue section was incubated with rabbit anti-CPT1B Antibody (PB9491) at a dilution of 1:200 and developed using Streptavidin-Biotin-Complex (SABC) (Catalog # SA1022) with DAB (Catalog # AR1027) as the chromogen.