

Basic Information

Product Name	Anti-BMP2 Antibody	
Gene Name	BMP2	
Source	Rabbit	
Clonality	Polyclonal	
Isotype	IgG	
Species Reactivity	human, rat	
Tested Application	WB, IHC, ELISA	
Contents	500 ug/ml antibody with PBS, 0.02% NaN ₃ , 1 mg/ml BSA and 50% glycerol.	
Immunogen	A synthetic peptide corresponding to a sequence at the C-terminus of human BMP-2, identical to the related mouse and rat sequences.	
Concentration	500 ug/ml	
Purification	Immunogen affinity purified.	
Observed MW	20 kDa, 40 kDa	
Dilution Ratios	Western blot (WB): 1:500-2000 Immunohistochemistry (IHC): 1:50-400 Enzyme linked immunosorbent assay (ELISA): 1:100-1000 (Boiling the paraffin sections in 10mM citrate buffer,pH6.0,or PH8.0 EDTA repair liquid for 20 mins is required for the staining of formalin/paraffin sections.) Optimal working dilutions must be determined by end user.	

Storage

12 months from date of receipt, -20°C as supplied. 6 months 2 to 8°C after reconstitution. Avoid repeated freezing and thawing.

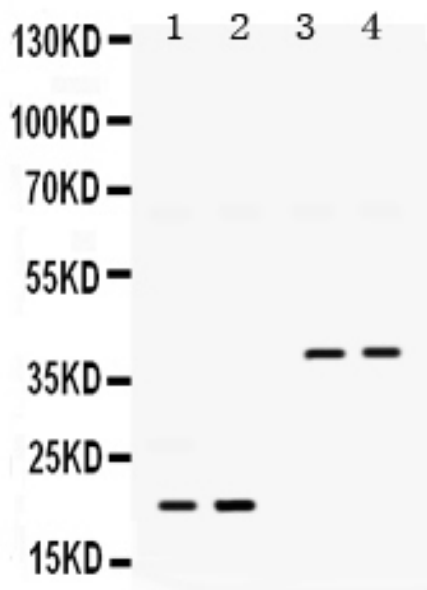
Background Information

BMP2 is also known as Bone morphogenetic protein 2 or BMP2A. It is mapped to 20p12. The protein encoded by this gene belongs to the transforming growth factor-beta (TGFB) superfamily. BMP-2, like other bone morphogenetic proteins, plays an important role in the development of bone and cartilage. It is involved in the hedgehog pathway, TGF beta signaling pathway, and in Cytokine-cytokine receptor interaction. Also, it is involved in cardiac cell differentiation and epithelial to mesenchymal transition. In addition, BMP2A has been suggested as a reasonable candidate for the human condition fibrodysplasia (myositis) ossificans progressiva, on the basis of observations in a Drosophila model.

Reference

Anti-BMP2 Antibody被引用在25文献中。

Selected Validation Data



Western blot analysis of BMP2 using anti-BMP2 antibody (PB9687).

The sample well of each lane was loaded with 30 ug of sample under reducing conditions.

Lane 1: Rat lung tissue lysates,

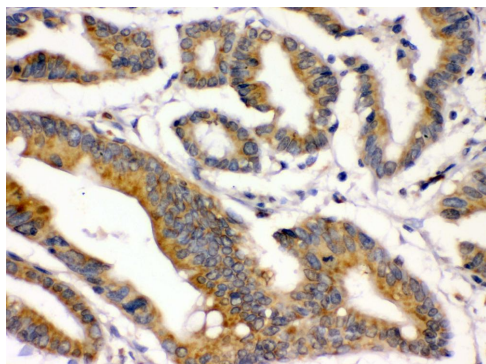
Lane 2: Rat brain tissue lysates,

Lane 3: U87 whole cell lysates,

Lane 4: HELA whole cell lysates.

After electrophoresis, proteins were transferred to a membrane.

Then the membrane was incubated with rabbit anti-BMP2 antigen affinity purified polyclonal antibody (PB9687) at a dilution of 1:1000 and probed with a goat anti-rabbit IgG-HRP secondary antibody (Catalog # BA1054). The signal is developed using ECL Plus Western Blotting Substrate (Catalog # AR1197). A specific band was detected for BMP2 at approximately 20 kDa, 40 kDa. The expected band size for BMP2 is at 45 kDa.



IHC analysis of BMP2 using anti-BMP2 antibody (PB9687).

BMP2 was detected in a paraffin-embedded section of human intestinal cancer tissue. Biotinylated goat anti-rabbit IgG was used as secondary antibody. The tissue section was incubated with rabbit anti-BMP2 Antibody (PB9687) at a dilution of 1:200 and developed using Streptavidin-Biotin-Complex (SABC) (Catalog # SA1022) with DAB (Catalog # AR1027) as the chromogen.