

Basic Information

Product Name	Anti-IL10 Antibody	
Gene Name	IL10	
Source	Rabbit	
Clonality	Polyclonal	
Isotype	IgG	
Species Reactivity	human	
Tested Application	WB, IHC, ELISA	
Contents	500 ug/ml antibody with PBS, 0.02% NaN ₃ , 1 mg/ml BSA and 50% glycerol.	
Immunogen	E. coli-derived human IL-10 recombinant protein(Position: S19-N178).	
Concentration	500 ug/ml	
Purification	Immunogen affinity purified.	
Observed MW	17 kDa	
Dilution Ratios	Western blot (WB): 1:500-2000 Immunohistochemistry (IHC): 1:50-400 Enzyme linked immunosorbent assay (ELISA): 1:100-1000 (Boiling the paraffin sections in 10mM citrate buffer,pH6.0,or PH8.0 EDTA repair liquid for 20 mins is required for the staining of formalin/paraffin sections.) Optimal working dilutions must be determined by end user.	

Storage

12 months from date of receipt, -20°C as supplied. 6 months 2 to 8°C after reconstitution. Avoid repeated freezing and thawing.

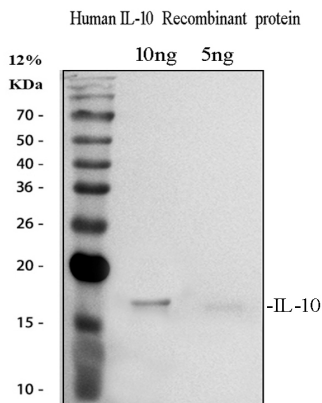
Background Information

Interleukin-10(IL-10 or IL10), also known as human cytokine synthesis inhibitory factor(CSIF), is an anti-inflammatory cytokine. In humans IL-10 is encoded by the IL10 gene. It is capable of inhibiting synthesis of pro-inflammatory cytokines like IFN-gamma, IL-2, IL-3, TNFalpha and GM-CSF made by cells such as macrophages and regulatory T-cells.IL-10 also displays potent abilities to suppress the antigen presentation capacity of antigen presenting cells. Kim et al.(1992) showed that the mouse IL 10 gene contains 5 exons and spans about 5.2 kb of genomic DNA. Eskdale et al.(1997) mapped the IL10 gene to the junction between 1q31 and 1q32.

Reference

Anti-IL10 Antibody被引用在5文献中。

Selected Validation Data

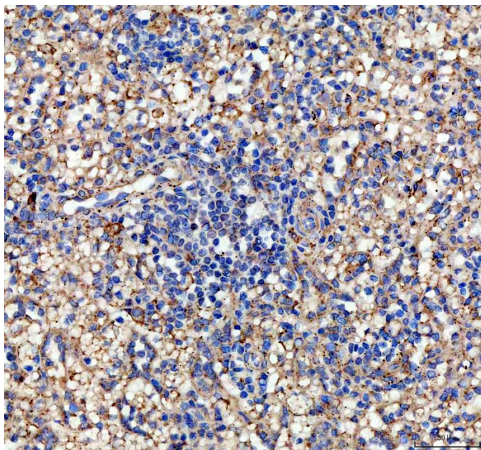


Western blot analysis of IL10 using anti-IL10 antibody (RP1014).

Lane 1: recombinant human IL10 protein 10 ng,

Lane 2: recombinant human IL10 protein 5 ng.

After electrophoresis, proteins were transferred to a membrane. Then the membrane was incubated with rabbit anti-IL10 antigen affinity purified polyclonal antibody (RP1014) at a dilution of 1:1000 and probed with a goat anti-rabbit IgG-HRP secondary antibody (Catalog # BA1054). The signal is developed using ECL Plus Western Blotting Substrate (Catalog # AR1197). A specific band was detected for IL10 at approximately 17 kDa.



IHC analysis of IL10 using anti-IL10 antibody (RP1014).

IL10 was detected in a paraffin-embedded section of human spleen tissue. The tissue section was incubated with rabbit anti-IL10 Antibody (RP1014) at a dilution of 1:200 and developed using HRP Conjugated Rabbit IgG Super Vision Assay Kit (Catalog # SV0002) with DAB (Catalog # AR1027) as the chromogen.