

## Basic Information

Product Name	Anti-TGF Beta 1/TGFB1 Antibody
Gene Name	TGFB1
Source	Rabbit
Clonality	Polyclonal
Isotype	IgG
Species Reactivity	rat
Tested Application	IHC
Contents	500 ug/ml antibody with PBS, 0.02% NaN <sub>3</sub> , 1 mg/ml BSA and 50% glycerol.
Immunogen	A synthetic peptide corresponding to a sequence of at the N-terminus human TGF beta 1/TGFB1, identical to the related mouse and rat sequences.
Concentration	500 ug/ml
Purification	Immunogen affinity purified.
Dilution Ratios	Immunohistochemistry (IHC): 1:50-400 (Boiling the paraffin sections in 10mM citrate buffer, pH6.0, or PH8.0 EDTA repair liquid for 20 mins is required for the staining of formalin/paraffin sections.) Optimal working dilutions must be determined by end user.

## Storage

12 months from date of receipt, -20°C as supplied.

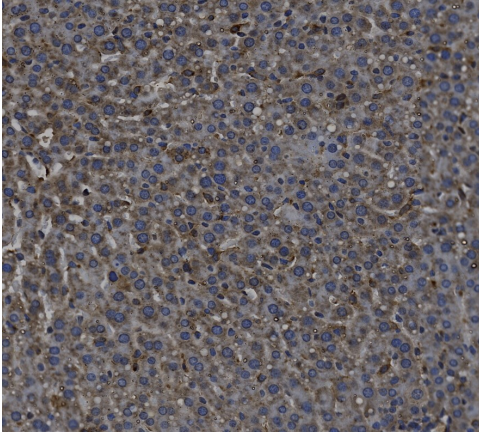
## Background Information

This gene encodes a secreted ligand of the TGF-beta (transforming growth factor-beta) superfamily of proteins. Ligands of this family bind various TGF-beta receptors leading to recruitment and activation of SMAD family transcription factors that regulate gene expression. The encoded preproprotein is proteolytically processed to generate a latency-associated peptide (LAP) and a mature peptide, and is found in either a latent form composed of a mature peptide homodimer, a LAP homodimer, and a latent TGF-beta binding protein, or in an active form consisting solely of the mature peptide homodimer. The mature peptide may also form heterodimers with other TGFB family members. This encoded protein regulates cell proliferation, differentiation and growth, and can modulate expression and activation of other growth factors including interferon gamma and tumor necrosis factor alpha. This gene is frequently upregulated in tumor cells, and mutations in this gene result in Camurati-Engelmann disease.

## Reference

Anti-TGF Beta 1/TGFB1 Antibody被引用在31文献中。

## Selected Validation Data



IHC analysis of TGF Beta 1/TGFB1 using anti-TGF Beta 1/TGFB1 antibody (A00019-2).

TGF Beta 1/TGFB1 was detected in a paraffin-embedded section of rat liver tissue. Biotinylated goat anti-rabbit IgG was used as secondary antibody. The tissue section was incubated with rabbit anti-TGF Beta 1/TGFB1 Antibody (A00019-2) at a dilution of 1:200 and developed using Streptavidin-Biotin-Complex (SABC) (Catalog # SA1022) with DAB (Catalog # AR1027) as the chromogen.