

Basic Information

Product Name	Anti-EGFR Antibody	
Gene Name	EGFR	
Source	Rabbit	
Clonality	Polyclonal	
Isotype	IgG	
Species Reactivity	mouse, rat	
Tested Application	WB, IHC, ELISA	
Contents	500 ug/ml antibody with PBS, 0.02% NaN ₃ , 1 mg/ml BSA and 50% glycerol.	
Immunogen	E.coli-derived mouse EGFR recombinant protein (Position: L25-P596).	
Concentration	500 ug/ml	
Purification	Immunogen affinity purified.	
Observed MW	175 kDa	
Dilution Ratios	Western blot (WB): 1:500-2000 Immunohistochemistry (IHC): 1:50-400 Enzyme linked immunosorbent assay (ELISA): 1:100-1000 (Boiling the paraffin sections in 10mM citrate buffer,pH6.0,or PH8.0 EDTA repair liquid for 20 mins is required for the staining of formalin/paraffin sections.) Optimal working dilutions must be determined by end user.	

Storage

12 months from date of receipt, -20°C as supplied.

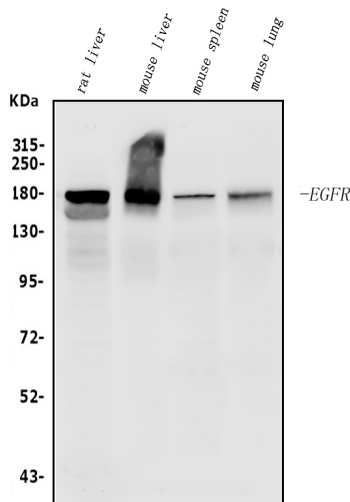
Background Information

The epidermal growth factor receptor (EGFR; ErbB-1; HER1 in humans) is a transmembrane protein that is a receptor for members of the epidermal growth factor family (EGF family) of extracellular protein ligands. It is mapped to 11 A2; 11 9.41 cM. The protein encoded by this gene is a transmembrane glycoprotein that is a member of the protein kinase superfamily. This protein is a receptor for members of the epidermal growth factor family. EGFR is a cell surface protein that binds to epidermal growth factor. Binding of the protein to a ligand induces receptor dimerization and tyrosine autophosphorylation and leads to cell proliferation. Mutations in this gene are associated with lung cancer.

Reference

Anti-EGFR Antibody被引用在4文献中。

Selected Validation Data



Western blot analysis of EGFR using anti-EGFR antibody (A00023-2). The sample well of each lane was loaded with 30 ug of sample under reducing conditions.

Lane 1: rat liver tissue lysates,

Lane 2: mouse liver tissue lysates,

Lane 3: mouse testicular tissue lysates,

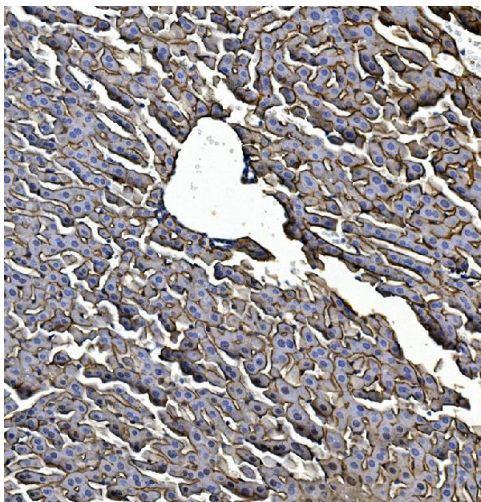
Lane 4: mouse spleen tissue lysates,

Lane 5: mouse lung tissue lysates,

Lane 6: mouse RAW264.7 whole cell lysates,

Lane 7: mouse NIH/3T3 whole cell lysates.

After electrophoresis, proteins were transferred to a membrane. Then the membrane was incubated with rabbit anti-EGFR antigen affinity purified polyclonal antibody (A00023-2) at a dilution of 1:1000 and probed with a goat anti-rabbit IgG-HRP secondary antibody (Catalog # BA1054). The signal is developed using ECL Plus Western Blotting Substrate (Catalog # AR1197). A specific band was detected for EGFR at approximately 175 kDa. The expected band size for EGFR is at 135 kDa.



IHC analysis of EGFR using anti-EGFR antibody (A00023-2).

EGFR was detected in a paraffin-embedded section of mouse liver tissue. Biotinylated goat anti-rabbit IgG was used as secondary antibody. The tissue section was incubated with rabbit anti-EGFR Antibody (A00023-2) at a dilution of 1:200 and developed using Streptavidin-Biotin-Complex (SABC) (Catalog # SA1022) with DAB (Catalog # AR1027) as the chromogen.

Product datasheet

Anti-EGFR Antibody

Catalog Number: **A00023-2**



antibody and ELISA experts

BOSTER BIOLOGICAL TECHNOLOGY

Building C21, 3rd to 5th Floors, Optics Valley Biopharmaceutical Accelerator,
East Lake High-Tech Development Zone, Wuhan.

Web: www.boster.com **Phone:** 027-67845390/1/2 **Email:** boster@boster.com