

## Basic Information

Product Name	Anti-MCP-1/CCL2 Antibody
Gene Name	CCL2
Source	Rabbit
Clonality	Polyclonal
Isotype	IgG
Species Reactivity	mouse, rat
Tested Application	WB, ELISA(Cap)
Contents	500 ug/ml antibody with PBS, 0.02% NaN <sub>3</sub> , 1 mg/ml BSA and 50% glycerol.
Immunogen	E. coli-derived rat CCL2 recombinant protein (Position: Q24-R96).
Concentration	500 ug/ml
Purification	Immunogen affinity purified.
Observed MW	11,25 kDa
Dilution Ratios	Western blot (WB):1:500-2000 ELISA(Cap): 1:50-1:200

## Storage

12 months from date of receipt, -20°C as supplied.

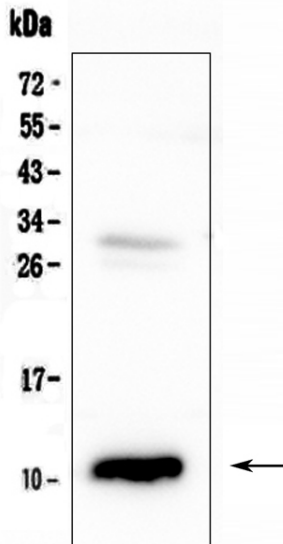
## Background Information

Monocyte chemoattractant protein-1 (MCP-1), a member of the chemokine (chemotactic cytokine) family, is a potent monocyte agonist that is upregulated by oxidized lipids. MCP-1 is also known as CCL2, SCYA2, MCAF. MCAF is a member of family of factors involved in immune and inflammatory responses. The amino acid sequence deduced from the nucleotide sequence reveals the primary structure of the MCAF precursor to be composed of a putative signal peptide sequence of 23 amino acid residues and a mature MCAF sequence of 76 amino acid residues. MCP-1 plays a unique and crucial role in the initiation of atherosclerosis and may provide a new therapeutic target in this disorder. Human MCP-1 is a 8.7KDa non-glycoprotein, consisting of 99 amino acids in precursor form and 76 amino acids in mature form.

## Reference

Anti-MCP-1/CCL2 Antibody 被引用在18文献中。

## Selected Validation Data



Western blot analysis of MCP-1/CCL2 using anti-MCP-1/CCL2 antibody (A00056-4). The sample well of each lane was loaded with 30 ug of sample under reducing conditions.

Lane 1: rat pancreas tissue lysates.

After electrophoresis, proteins were transferred to a membrane. Then the membrane was incubated with rabbit anti-MCP-1/CCL2 antigen affinity purified polyclonal antibody (A00056-4) at a dilution of 1:1000 and probed with a goat anti-rabbit IgG-HRP secondary antibody (Catalog # BA1054).

The signal is developed using ECL Plus Western Blotting Substrate (Catalog # AR1197). A specific band was detected for MCP-1/CCL2 at approximately 11,25 kDa. The expected band size for MCP-1/CCL2 is at 16 kDa.