

Basic Information

Product Name	Anti-KLF4 Antibody	
Gene Name	KLF4	
Source	Rabbit	
Clonality	Polyclonal	
Isotype	IgG	
Species Reactivity	human, mouse, rat	
Tested Application	WB, IHC, FCM, ELISA	
Contents	500 ug/ml antibody with PBS, 0.02% NaN ₃ , 1 mg/ml BSA and 50% glycerol.	
Immunogen	E.coli-derived human KLF4 recombinant protein (Position: M1-H389).	
Concentration	500 ug/ml	
Purification	Immunogen affinity purified.	
Observed MW	55 kDa	
Dilution Ratios	Western blot (WB):	1:500-2000
	Immunohistochemistry (IHC):	1:50-400
	Flow Cytometry (Fixed):	1:50-200
	Enzyme linked immunosorbent assay (ELISA):	1:100-1000
	(Boiling the paraffin sections in 10mM citrate buffer,pH6.0,or PH8.0 EDTA repair liquid for 20 mins is required for the staining of formalin/paraffin sections.) Optimal working dilutions must be determined by end user.	

Storage

12 months from date of receipt, -20°C as supplied.

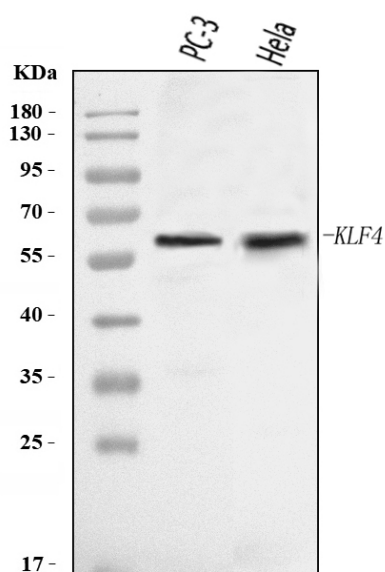
Background Information

Kruppel-like factor 4, also known as EZF or GKLF, is a protein that in humans is encoded by the KLF4 gene. This gene is mapped to 9q31.2. KLF4 gene encodes a member of the Kruppel family of transcription factors. This gene plays an important role in maintaining embryonic stem cells, and in preventing their differentiation. It is required for establishing the barrier function of the skin and for postnatal maturation and maintenance of the ocular surface. This gene involved in the differentiation of epithelial cells and may also function in skeletal and kidney development.

Reference

Anti-KLF4 Antibody被引用在3文献中。

Selected Validation Data



Western blot analysis of KLF4 using anti-KLF4 antibody (A00120-3).

The sample well of each lane was loaded with 30 ug of sample under reducing conditions.

Lane 1: PC-3 whole cell lysates,

Lane 2: HeLa whole cell lysates.

After electrophoresis, proteins were transferred to a membrane.

Then the membrane was incubated with rabbit anti-KLF4 antigen

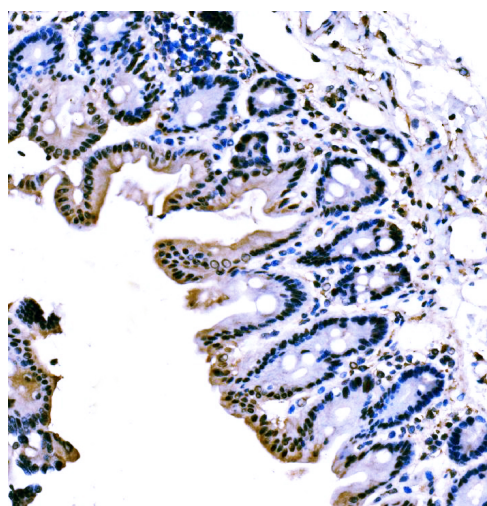
affinity purified polyclonal antibody (A00120-3) at a dilution of

1:1000 and probed with a goat anti-rabbit IgG-HRP secondary

antibody (Catalog # BA1054). The signal is developed using ECL Plus

Western Blotting Substrate (Catalog # AR1197). A specific band was

detected for KLF4 at approximately 55 kDa. The expected band size for KLF4 is at 55 kDa.



IHC analysis of KLF4 using anti-KLF4 antibody (A00120-3).

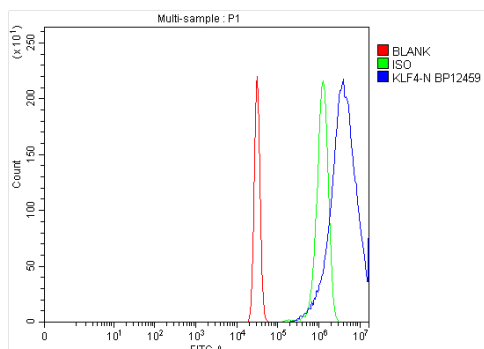
KLF4 was detected in a paraffin-embedded section of mouse

stomach tissue. The tissue section was incubated with rabbit anti-

KLF4 Antibody (A00120-3) at a dilution of 1:200 and developed using

HRP Conjugated Rabbit IgG Super Vision Assay Kit (Catalog #

SV0002) with DAB (Catalog # AR1027) as the chromogen.



Flow Cytometry analysis of Hela cells using anti-KLF4 antibody (A00120-3).

Overlay histogram showing Hela cells stained with A00120-3 (Blue line). To facilitate intracellular staining, cells were fixed with 4% paraformaldehyde and permeabilized with permeabilization buffer. The cells were blocked with 10% normal goat serum. And then incubated with rabbit anti-KLF4 Antibody (A00120-3) at 1:100 dilution for 30 min at 20°C. Fluoro488 conjugated goat anti-rabbit IgG (BA1127) was used as secondary antibody at 1:100 dilution for 30 minutes at 20°C. Isotype control antibody (Green line) was rabbit IgG at 1:100 dilution used under the same conditions. Unlabelled sample without incubation with primary antibody and secondary antibody (Red line) was used as a blank control.