

Basic Information

Product Name	Anti-TLR2 Antibody
Gene Name	Tlr2
Source	Rabbit
Clonality	Polyclonal
Isotype	IgG
Species Reactivity	mouse
Tested Application	WB, ELISA
Contents	500 ug/ml antibody with PBS, 0.02% NaN ₃ , 1 mg/ml BSA and 50% glycerol.
Immunogen	E.coli-derived mouse Tlr2 recombinant protein (Position: K20-K683).
Concentration	500 ug/ml
Purification	Immunogen affinity purified.
Observed MW	90 kDa
Dilution Ratios	Western blot (WB): 1:500-2000 Enzyme linked immunosorbent assay (ELISA):1:100-1000

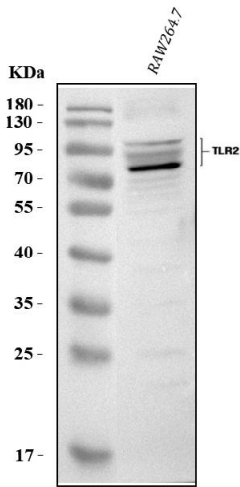
Storage

12 months from date of receipt, -20°C as supplied.

Background Information

Toll-like receptor 2 also known as TLR2 is a protein that in humans is encoded by the TLR2 gene. Enables lipoteichoic acid binding activity and peptide binding activity. Involved in several processes, including negative regulation of cellular component organization; positive regulation of cytokine production; and positive regulation of macromolecule biosynthetic process. Acts upstream of or within several processes, including pattern recognition receptor signaling pathway; regulation of cytokine production; and response to bacterium. Located in external side of plasma membrane. Part of Toll-like receptor 2-Toll-like receptor 6 protein complex. Is expressed in several structures, including brain; early embryo; genitourinary system; gut; and immune system. Human ortholog(s) of this gene implicated in several diseases, including autoimmune disease (multiple); dermatitis (multiple); gastrointestinal system cancer (multiple); lung disease (multiple); and rhinitis (multiple). Orthologous to human TLR2 (toll like receptor 2).

Selected Validation Data



Western blot analysis of anti-Tlr2 antibody (A00131-4). The sample well of each lane was loaded with 30 ug of sample under reducing conditions.

Lane 1: mouse RAW264.7 whole cell lysates.

After electrophoresis, proteins were transferred to a membrane. Then the membrane was incubated with rabbit anti-Tlr2 antigen affinity purified polyclonal antibody (A00131-4) and probed with a goat anti-rabbit IgG-HRP secondary antibody (Catalog # BA1054). The signal is developed using ECL Plus Western Blotting Substrate (Catalog # AR1197). A specific band was detected for Tlr2 at approximately 89 kDa. The expected band size for Tlr2 is at 89 kDa.