

## Basic Information

<b>Product Name</b>	Anti-WT1 Antibody	
<b>Gene Name</b>	WT1	
<b>Source</b>	Rabbit	
<b>Clonality</b>	Polyclonal	
<b>Isotype</b>	IgG	
<b>Species Reactivity</b>	human, mouse, rat	
<b>Tested Application</b>	WB, IHC, ICC/IF, IP, FCM	
<b>Contents</b>	500 ug/ml antibody with PBS, 0.02% NaN <sub>3</sub> , 1 mg/ml BSA and 50% glycerol.	
<b>Immunogen</b>	E.coli-derived human WT1 recombinant protein (Position: M1-L445)	
<b>Concentration</b>	500 ug/ml	
<b>Purification</b>	Immunogen affinity purified.	
<b>Dilution Ratios</b>	Western blot (WB):	1:500-2000
	Immunohistochemistry (IHC):	1:50-400
	Immunocytochemistry/Immunofluorescence (ICC/IF):	1:50-400
	ImmunoPrecipitation (IP):	1:50
	Flow Cytometry (Fixed):	1:50-200
	(Boiling the paraffin sections in 10mM citrate buffer,pH6.0,or PH8.0 EDTA repair liquid for 20 mins is required for the staining of formalin/paraffin sections.) Optimal working dilutions must be determined by end user.	

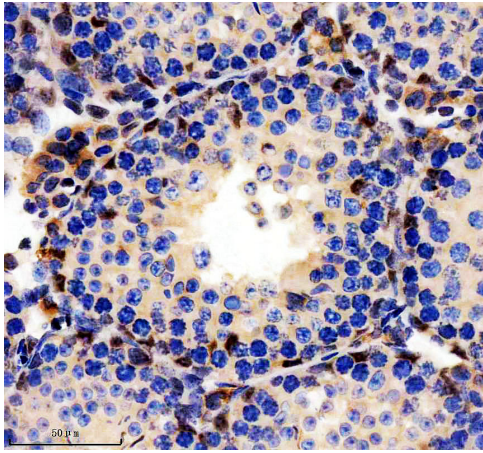
## Storage

12 months from date of receipt, -20°C as supplied.

## Reference

Anti-WT1 Antibody被引用在2文献中。

## Selected Validation Data



IHC analysis of WT1 using anti-WT1 antibody (A00199-2).

WT1 was detected in a paraffin-embedded section of mouse testis tissue. The tissue section was incubated with rabbit anti-WT1 Antibody (A00199-2) at a dilution of 1:200 and developed using HRP Conjugated Rabbit IgG Super Vision Assay Kit (Catalog # SV0002) with DAB (Catalog # AR1027) as the chromogen.