

Basic Information

Product Name	Anti-Hemoglobin/HBA1/HBA2 Antibody
Gene Name	HBA1/HBA2
Source	Rabbit
Clonality	Polyclonal
Isotype	IgG
Species Reactivity	human, mouse
Tested Application	WB, IHC
Contents	500 ug/ml antibody with PBS, 0.02% NaN ₃ , 1 mg/ml BSA and 50% glycerol.
Immunogen	A synthetic peptide corresponding to a sequence at the C-terminus of human Hemoglobin/HBA1/HBA2, identical to the related mouse and rat sequences.
Concentration	500 ug/ml
Purification	Immunogen affinity purified.
Observed MW	15 kDa
Dilution Ratios	Western blot (WB): 1:500-2000 Immunohistochemistry (IHC):1:50-400

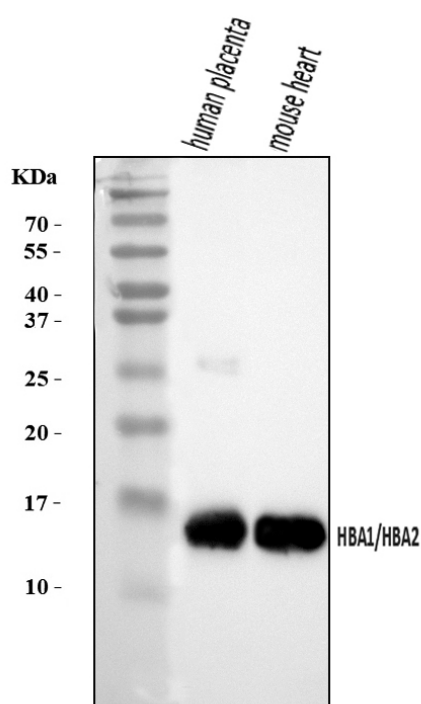
Storage

12 months from date of receipt, -20°C as supplied.

Background Information

The human alpha globin gene cluster located on chromosome 16 spans about 30 kb and includes seven loci: 5'- zeta - pseudozeta - mu - pseudoalpha-1 - alpha-2 - alpha-1 - theta - 3'. The alpha-2 (HBA2) and alpha-1 (HBA1) coding sequences are identical. These genes differ slightly over the 5' untranslated regions and the introns, but they differ significantly over the 3' untranslated regions. Two alpha chains plus two beta chains constitute HbA, which in normal adult life comprises about 97% of the total hemoglobin; alpha chains combine with delta chains to constitute HbA-2, which with HbF (fetal hemoglobin) makes up the remaining 3% of adult hemoglobin. Alpha thalassemias result from deletions of each of the alpha genes as well as deletions of both HBA2 and HBA1; some nondeletion alpha thalassemias have also been reported.

Selected Validation Data



Western blot analysis of Hemoglobin/HBA1/HBA2 using anti-

Hemoglobin/HBA1/HBA2 antibody (A00233-2). The sample well of each

lane was loaded with 30 ug of sample under reducing conditions.

Lane 1: human placenta tissue lysates,

Lane 2: mouse heart tissue lysates.

After electrophoresis, proteins were transferred to a membrane. Then the

membrane was incubated with rabbit anti-Hemoglobin/HBA1/HBA2

antigen affinity purified polyclonal antibody (A00233-2) at a dilution of

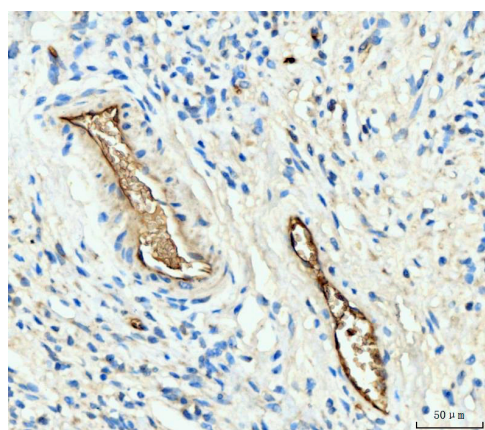
1:1000 and probed with a goat anti-rabbit IgG-HRP secondary antibody

(Catalog # BA1054). The signal is developed using ECL Plus Western

Blotting Substrate (Catalog # AR1197). A specific band was detected for

Hemoglobin/HBA1/HBA2 at approximately 15 kDa. The expected band size

for Hemoglobin/HBA1/HBA2 is at 15 kDa.



IHC analysis of Hemoglobin/HBA1/HBA2 using anti-

Hemoglobin/HBA1/HBA2 antibody (A00233-2).

Hemoglobin/HBA1/HBA2 was detected in a paraffin-embedded section of

human gastric signet ring cell carcinoma tissue. Biotinylated goat anti-

rabbit IgG was used as secondary antibody. The tissue section was

incubated with rabbit anti-Hemoglobin/HBA1/HBA2 Antibody (A00233-2) at

a dilution of 1:200 and developed using Streptavidin-Biotin-Complex

(SABC) (Catalog # SA1022) with DAB (Catalog # AR1027) as the

chromogen.