

Basic Information

Product Name	Anti-CD326/EPCAM Antibody	
Gene Name	EPCAM	
Source	Rabbit	
Clonality	Polyclonal	
Isotype	IgG	
Species Reactivity	mouse, rat	
Tested Application	IHC, IF, ELISA	
Contents	500 ug/ml antibody with PBS, 0.02% NaN3, 1 mg/ml BSA and 50% glycerol.	
Immunogen	E.coli-derived mouse EpCAM recombinant protein (Position: E147-N189).	
Concentration	500 ug/ml	
Purification	Immunogen affinity purified.	
Dilution Ratios	Immunohistochemistry (IHC):	1:50-400
	Immunofluorescence (IF):	1:50-400
	ELISA:	1:100-1000
	(Boiling the paraffin sections in 10mM citrate buffer,pH6.0,or PH8.0 EDTA repair liquid for 20 mins is required for the staining of formalin/paraffin sections.) Optimal working dilutions must be determined by end user.	

Storage

12 months from date of receipt, -20°C as supplied.

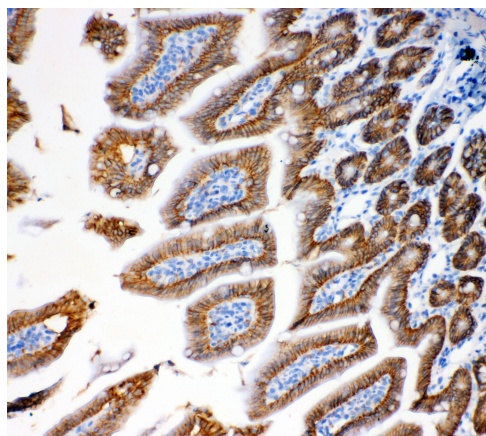
Background Information

Epithelial cell adhesion molecule (EPCAM) is a transmembrane glycoprotein mediating Ca²⁺-independent homotypic cell-cell adhesion in epithelia. This gene encodes a carcinoma-associated antigen and is a member of a family that includes at least two type I membrane proteins. This antigen is expressed on most normal epithelial cells and gastrointestinal carcinomas and functions as a homotypic calcium-independent cell adhesion molecule. The antigen is being used as a target for immunotherapy treatment of human carcinomas. Mutations in this gene result in congenital tufting enteropathy.

Reference

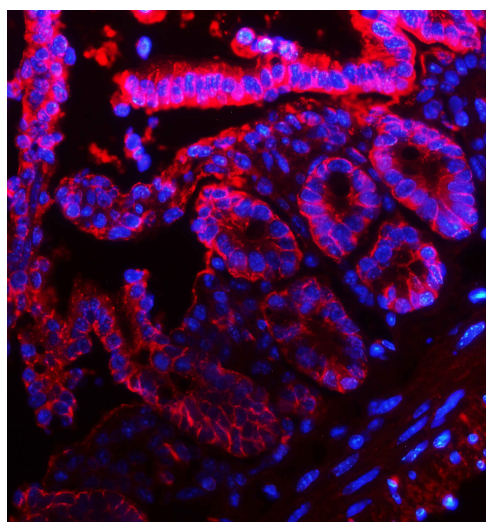
Anti-CD326/EPCAM Antibody被引用在1文献中。

Selected Validation Data



IHC analysis of CD326/EPCAM using anti-CD326/EPCAM antibody (A00276-1).

CD326/EPCAM was detected in a paraffin-embedded section of mouse intestine tissue. Biotinylated goat anti-rabbit IgG was used as secondary antibody. The tissue section was incubated with rabbit anti-CD326/EPCAM Antibody (A00276-1) at a dilution of 1:200 and developed using Streptavidin-Biotin-Complex (SABC) (Catalog # SA1022) with DAB (Catalog # AR1027) as the chromogen.



IF analysis using anti- EpCAM antibody (A00276-1). detected in paraffin-embedded section of mouse intestine tissue. The tissue section were stained using the Fluoro594-conjugated Anti-rabbit IgG Secondary Antibody (red)(Catalog # BA1142) and counterstained with DAPI (blue).