

Basic Information

| | | |
|---------------------------|-------------------------------------------------------------------------------------|------------|
| Product Name | Anti-CEA/CEACAM5 Antibody | |
| Gene Name | CEACAM5 | |
| Source | Rabbit | |
| Clonality | Polyclonal | |
| Isotype | IgG | |
| Species Reactivity | human | |
| Tested Application | WB, FCM, ELISA | |
| Contents | 500 ug/ml antibody with PBS, 0.02% NaN ₃ , 1 mg/ml BSA and 50% glycerol. | |
| Immunogen | E.coli-derived human CEA/CEACAM5 recombinant protein (Position: N553-G678). | |
| Concentration | 500 ug/ml | |
| Purification | Immunogen affinity purified. | |
| Observed MW | 130-200 kDa | |
| Dilution Ratios | Western blot (WB): | 1:500-2000 |
| | Flow Cytometry (Fixed): | 1:50-200 |
| | Enzyme linked immunosorbent assay (ELISA): | 1:100-1000 |

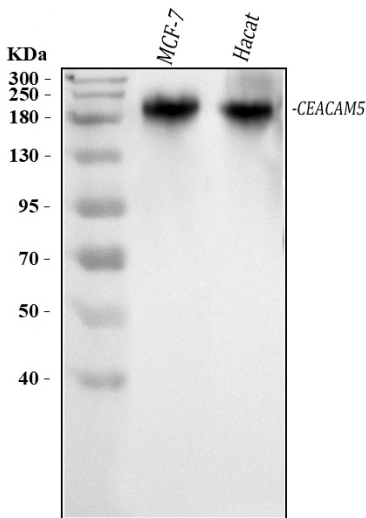
Storage

12 months from date of receipt, -20°C as supplied.

Background Information

CEA(Carcinoembryonic antigen) is a glycoprotein involved in cell adhesion. It is normally produced during fetal development, but the production of CEA stops before birth. Therefore, it is not usually present in the blood of healthy adults, although levels are raised in heavy smokers. CEA is a glycosyl phosphatidyl inositol(GPI)-cell surface anchored glycoprotein whose specialized sialofucosylated glycoforms serve as functional colon carcinoma L-selectin and E-selectin ligands, which may be critical to the metastatic dissemination of colon carcinoma cells. CEA and related genes make up the CEA family belonging to the immunoglobulin superfamily. In humans, the carcinoembryonic antigen family consists of 29 genes, 18 of which are normally expressed.

Selected Validation Data



Western blot analysis of anti-CEA/CEACAM5 antibody (A00356-2).

The sample well of each lane was loaded with 30 ug of sample under reducing conditions.

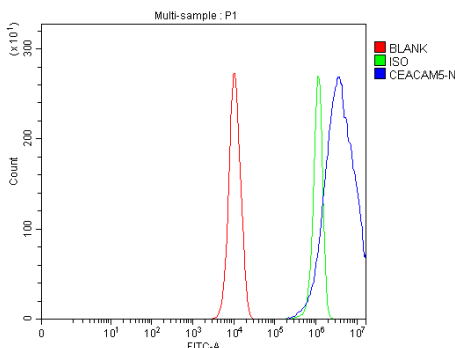
Lane 1: human MCF-7 whole cell lysates,

Lane 2: human HacaT whole cell lysates.

After electrophoresis, proteins were transferred to a membrane.

Then the membrane was incubated with rabbit anti-CEA/CEACAM5 antigen affinity purified polyclonal antibody (A00356-2) and probed with a goat anti-rabbit IgG-HRP secondary antibody (Catalog # BA1054).

The signal is developed using ECL Plus Western Blotting Substrate (Catalog # AR1197). A specific band was detected for CEA/CEACAM5 at approximately 200 kDa. The expected band size for CEA/CEACAM5 is at 77,180-200 kDa.



Flow Cytometry analysis of PC-3 cells using anti-CEA/CEACAM5 antibody (A00356-2).

Overlay histogram showing PC-3 cells stained with A00356-2 (Blue line). The cells were fixed with 4% paraformaldehyde and blocked with 10% normal goat serum. And then incubated with rabbit anti-CEA/CEACAM5 Antibody (A00356-2, 1:100). Fluoro488 conjugated goat anti-rabbit IgG (BA1127, 1:100) was used as secondary antibody. Isotype control antibody (Green line) was rabbit IgG (Catalog # BA1045) (1:100) used under the same conditions. Unlabelled sample (Red line) was also used as a control.