

## Basic Information

<b>Product Name</b>	Anti-CEA/CEACAM5 Antibody	
<b>Gene Name</b>	CEACAM5	
<b>Source</b>	Rabbit	
<b>Clonality</b>	Polyclonal	
<b>Isotype</b>	IgG	
<b>Species Reactivity</b>	human, mouse, rat	
<b>Tested Application</b>	WB, IHC, ELISA	
<b>Contents</b>	500 ug/ml antibody with PBS, 0.02% NaN3, 1 mg/ml BSA and 50% glycerol.	
<b>Immunogen</b>	E.coli-derived human CEACAM5 recombinant protein (Position: K35-N650).	
<b>Concentration</b>	500 ug/ml	
<b>Purification</b>	Immunogen affinity purified.	
<b>Observed MW</b>	130-200 kDa	
<b>Dilution Ratios</b>	Western blot (WB):	1:500-2000
	Immunohistochemistry (IHC):	1:50-400
	ELISA:	1:100-1000
	(Boiling the paraffin sections in 10mM citrate buffer,pH6.0,or PH8.0 EDTA repair liquid for 20 mins is required for the staining of formalin/paraffin sections.) Optimal working dilutions must be determined by end user.	

## Storage

12 months from date of receipt, -20°C as supplied.

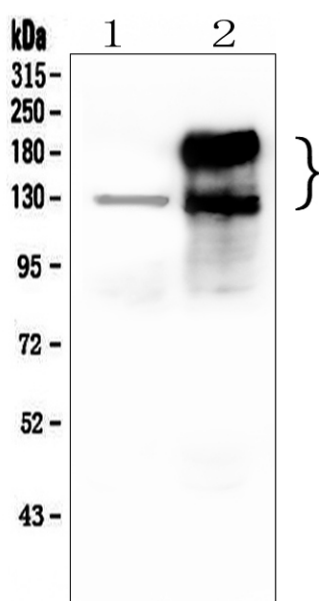
## Background Information

CEA(Carcinoembryonic antigen) is a glycoprotein involved in cell adhesion. It is normally produced during fetal development, but the production of CEA stops before birth. Therefore, it is not usually present in the blood of healthy adults, although levels are raised in heavy smokers. CEA is a glycosyl phosphatidyl inositol(GPI)-cell surface anchored glycoprotein whose specialized sialofucosylated glycoforms serve as functional colon carcinoma L-selectin and E-selectin ligands, which may be critical to the metastatic dissemination of colon carcinoma cells. CEA and related genes make up the CEA family belonging to the immunoglobulin superfamily. In humans, the carcinoembryonic antigen family consists of 29 genes, 18 of which are normally expressed.

## Reference

Anti-CEA/CEACAM5 Antibody 被引用在2文献中。

## Selected Validation Data



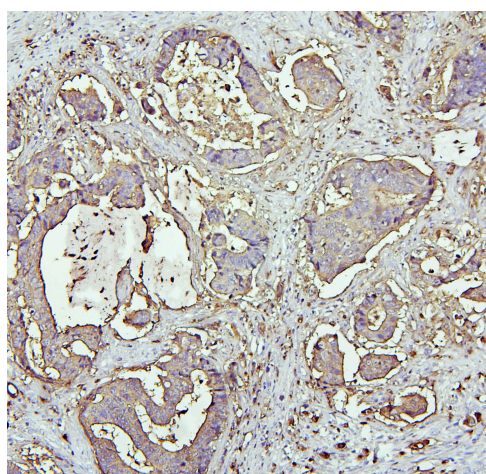
Western blot analysis of CEA/CEACAM5 using anti-CEA/CEACAM5 antibody (A00356). The sample well of each lane was loaded with 30 ug of sample under reducing conditions.

Lane 1: human SW620 whole cell lysates,

Lane 2: human Caco-2 whole cell lysates.

After electrophoresis, proteins were transferred to a membrane.

Then the membrane was incubated with rabbit anti-CEA/CEACAM5 antigen affinity purified polyclonal antibody (A00356) at a dilution of 1:1000 and probed with a goat anti-rabbit IgG-HRP secondary antibody (Catalog # BA1054). The signal is developed using ECL Plus Western Blotting Substrate (Catalog # AR1197). A specific band was detected for CEA/CEACAM5 at approximately 130-200 kDa. The expected band size for CEA/CEACAM5 is at 77 kDa.



IHC analysis of CEA/CEACAM5 using anti-CEA/CEACAM5 antibody (A00356).

CEA/CEACAM5 was detected in a paraffin-embedded section of human colon cancer tissue. Biotinylated goat anti-rabbit IgG was used as secondary antibody. The tissue section was incubated with rabbit anti-CEA/CEACAM5 Antibody (A00356) at a dilution of 1:200 and developed using Streptavidin-Biotin-Complex (SABC) (Catalog # SA1022) with DAB (Catalog # AR1027) as the chromogen.