

Basic Information

| | | |
|---------------------------|--|------------|
| Product Name | Anti-DAT/SLC6A3 Antibody | |
| Gene Name | SLC6A3 | |
| Source | Rabbit | |
| Clonality | Polyclonal | |
| Isotype | IgG | |
| Species Reactivity | human | |
| Tested Application | WB, FCM, ELISA | |
| Contents | 500 ug/ml antibody with PBS, 0.02% NaN ₃ , 1 mg/ml BSA and 50% glycerol. | |
| Immunogen | E. coli-derived human Dopamine Transporter/SLC6A3 recombinant protein (Position: M1-V620). Human SLC6A3 shares 93.5% amino acid (aa) sequence identity with both mouse and rat SLC6A3. | |
| Concentration | 500 ug/ml | |
| Purification | Immunogen affinity purified. | |
| Observed MW | 68 kDa | |
| Dilution Ratios | Western blot (WB): | 1:500-2000 |
| | Flow Cytometry (Fixed): | 1:50-200 |
| | Enzyme linked immunosorbent assay (ELISA): | 1:100-1000 |

Storage

12 months from date of receipt, -20°C as supplied.

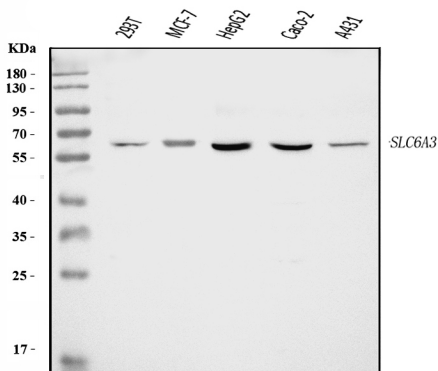
Background Information

This gene encodes a dopamine transporter which is a member of the sodium- and chloride-dependent neurotransmitter transporter family. The 3' UTR of this gene contains a 40 bp tandem repeat, referred to as a variable number tandem repeat or VNTR, which can be present in 3 to 11 copies. Variation in the number of repeats is associated with idiopathic epilepsy, attention-deficit hyperactivity disorder, dependence on alcohol and cocaine, susceptibility to Parkinson disease and protection against nicotine dependence.

Reference

Anti-DAT/SLC6A3 Antibody被引用在1文献中。

Selected Validation Data



Western blot analysis of DAT/SLC6A3 using anti-DAT/SLC6A3 antibody (A00369-3). The sample well of each lane was loaded with 30 ug of sample under reducing conditions.

Lane 1: 293T whole cell lysates,

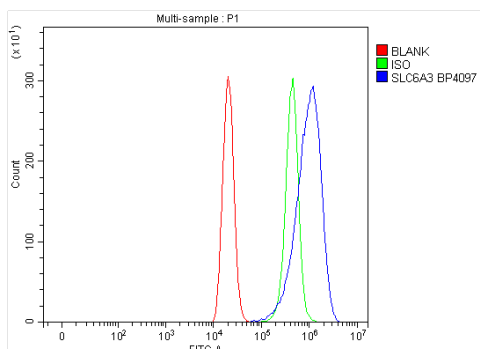
Lane 2: MCF-7 whole cell lysates,

Lane 3: HepG2 whole cell lysates,

Lane 4: Caco-2 whole cell lysates,

Lane 5: A431 whole cell lysates.

After electrophoresis, proteins were transferred to a membrane. Then the membrane was incubated with rabbit anti-DAT/SLC6A3 antigen affinity purified polyclonal antibody (A00369-3) at a dilution of 1:1000 and probed with a goat anti-rabbit IgG-HRP secondary antibody (Catalog # BA1054). The signal is developed using ECL Plus Western Blotting Substrate (Catalog # AR1197). A specific band was detected for DAT/SLC6A3 at approximately 68 kDa. The expected band size for DAT/SLC6A3 is at 68 kDa.



Flow Cytometry analysis of THP-1 cells using anti-DAT/SLC6A3 antibody (A00369-3).

Overlay histogram showing THP-1 cells stained with A00369-3 (Blue line). To facilitate intracellular staining, cells were fixed with 4% paraformaldehyde and permeabilized with permeabilization buffer. The cells were blocked with 10% normal goat serum. And then incubated with rabbit anti-DAT/SLC6A3 Antibody (A00369-3) at 1:100 dilution for 30 min at 20°C. Fluoro488 conjugated goat anti-rabbit IgG (BA1127) was used as secondary antibody at 1:100 dilution for 30 minutes at 20°C. Isotype control antibody (Green line) was rabbit IgG at 1:100 dilution used under the same conditions. Unlabelled sample without incubation with primary antibody and secondary

Product datasheet

Anti-DAT/SLC6A3 Antibody

Catalog Number: **A00369-3**



antibody and ELISA experts

BOSTER BIOLOGICAL TECHNOLOGY

Building C21, 3rd to 5th Floors, Optics Valley Biopharmaceutical Accelerator,
East Lake High-Tech Development Zone, Wuhan.

Web: www.boster.com **Phone:** 027-67845390/1/2 **Email:** boster@boster.com

antibody (Red line) was used as a blank control.