

Basic Information

Product Name	Anti-EGF Antibody	
Gene Name	EGF	
Source	Rabbit	
Clonality	Polyclonal	
Isotype	IgG	
Species Reactivity	rat	
Tested Application	WB, IHC, ELISA	
Contents	500 ug/ml antibody with PBS, 0.02% NaN ₃ , 1 mg/ml BSA and 50% glycerol.	
Immunogen	E. coli-derived rat EGF recombinant protein (Position: N974-R1026). Rat EGF shares 69.8% and 77.4% amino acid (aa) sequence identity with human and mouse EGF, respectively.	
Concentration	500 ug/ml	
Purification	Immunogen affinity purified.	
Observed MW	134 kDa	
Dilution Ratios	Western blot (WB): 1:500-2000 Immunohistochemistry (IHC): 1:50-400 Enzyme linked immunosorbent assay (ELISA): 1:100-1000 (Boiling the paraffin sections in 10mM citrate buffer,pH6.0,or PH8.0 EDTA repair liquid for 20 mins is required for the staining of formalin/paraffin sections.) Optimal working dilutions must be determined by end user.	

Storage

12 months from date of receipt, -20°C as supplied.

Background Information

EGF is known as epidermal growth factor. This gene encodes a member of the epidermal growth factor superfamily. The encoded preproprotein is proteolytically processed to generate the 53-amino acid epidermal growth factor peptide. This protein acts a potent mitogenic factor that plays an important role in the growth, proliferation and differentiation of numerous cell types. Additionally, it acts by binding with high affinity to the cell surface receptor, epidermal growth factor receptor. Defects in this gene are the cause of hypomagnesemia type 4. Dysregulation of this gene has been associated with the growth and progression of certain cancers. Alternative splicing results in multiple transcript variants, at least one of which encodes a preproprotein that is proteolytically processed.

Reference

Anti-EGF Antibody被引用在16文献中。

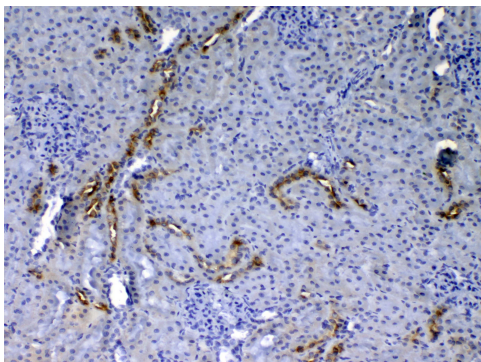
Selected Validation Data



Western blot analysis of EGF using anti-EGF antibody (A00378-1).

Lane 1: recombinant rat EGF protein 1ng.

After electrophoresis, proteins were transferred to a membrane. Then the membrane was incubated with rabbit anti-EGF antigen affinity purified polyclonal antibody (A00378-1) at a dilution of 1:1000 and probed with a goat anti-rabbit IgG-HRP secondary antibody (Catalog # BA1054). The signal is developed using ECL Plus Western Blotting Substrate (Catalog # AR1197). A specific band was detected for EGF at approximately 6 kDa.



IHC analysis of EGF using anti-EGF antibody (A00378-1).

EGF was detected in a paraffin-embedded section of rat kidney tissue. Biotinylated goat anti-rabbit IgG was used as secondary antibody. The tissue section was incubated with rabbit anti-EGF Antibody (A00378-1) at a dilution of 1:200 and developed using Streptavidin-Biotin-Complex (SABC) (Catalog # SA1022) with DAB (Catalog # AR1027) as the chromogen.

Product datasheet

Anti-EGF Antibody

Catalog Number: **A00378-1**



antibody and ELISA experts

BOSTER BIOLOGICAL TECHNOLOGY

Building C21, 3rd to 5th Floors, Optics Valley Biopharmaceutical Accelerator,
East Lake High-Tech Development Zone, Wuhan.

Web: www.boster.com **Phone:** 027-67845390/1/2 **Email:** boster@boster.com