

Basic Information

Product Name	Anti-IL2 Antibody	
Gene Name	IL2	
Source	Rabbit	
Clonality	Polyclonal	
Isotype	IgG	
Species Reactivity	human	
Tested Application	WB, IHC, ELISA	
Contents	500 ug/ml antibody with PBS, 0.02% NaN3, 1 mg/ml BSA and 50% glycerol.	
Immunogen	E. coli-derived human IL-2 recombinant protein (Position: A21-T153). Human IL-2 shares 57.5% and 66.4% amino acid (aa) sequence identity with mouse and rat IL-2, respectively.	
Concentration	500 ug/ml	
Purification	Immunogen affinity purified.	
Observed MW	15 kDa	
Dilution Ratios	Western blot (WB):	1:500-2000
	Immunohistochemistry (IHC):	1:50-400
	Enzyme linked immunosorbent assay (ELISA):	1:100-1000
	(Boiling the paraffin sections in 10mM citrate buffer,pH6.0,or PH8.0 EDTA repair liquid for 20 mins is required for the staining of formalin/paraffin sections.) Optimal working dilutions must be determined by end user.	

Storage

12 months from date of receipt, -20°C as supplied.

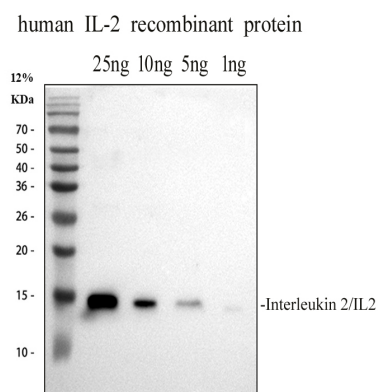
Background Information

IL-2, Interleukin-2, formerly referred to as T-cell growth factor, is a powerfully immunoregulatory lymphokine that is produced by lectin-or antigen-activated T cells. In situ hybridization, the IL-2 gene is assigned to 4q26-q28. IL2 can act as a growth hormone for both B and T lymphocytes. It is useful in the study of the molecular nature of T-cell differentiation and, like interferons, augments natural killer cell activity.

Reference

Anti-IL2 Antibody被引用在4文献中。

Selected Validation Data



Western blot analysis of IL2 using anti-IL2 antibody (A00387-1).

Lane 1: recombinant human IL2 protein 25 ng,

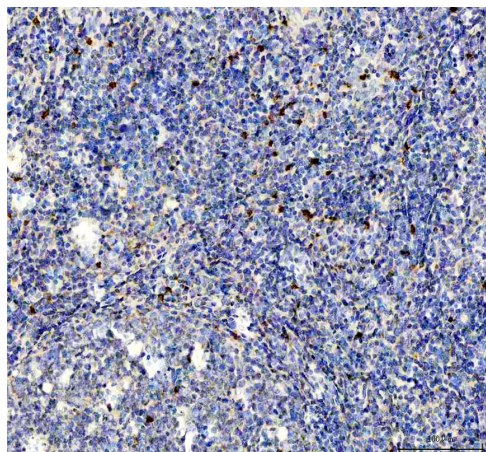
Lane 2: recombinant human IL2 protein 10 ng,

Lane 3: recombinant human IL2 protein 5 ng,

Lane 4: recombinant human IL2 protein 1 ng.

After electrophoresis, proteins were transferred to a membrane.

Then the membrane was incubated with rabbit anti-IL2 antigen affinity purified polyclonal antibody (A00387-1) at a dilution of 1:1000 and probed with a goat anti-rabbit IgG-HRP secondary antibody (Catalog # BA1054). The signal is developed using ECL Plus Western Blotting Substrate (Catalog # AR1197). A specific band was detected for IL2 at approximately 15 kDa.



IHC analysis of IL2 using anti-IL2 antibody (A00387-1).

IL2 was detected in a paraffin-embedded section of human tonsil tissue. The tissue section was incubated with rabbit anti-IL2 Antibody (A00387-1) at a dilution of 1:200 and developed using HRP Conjugated Rabbit IgG Super Vision Assay Kit (Catalog # SV0002) with DAB (Catalog # AR1027) as the chromogen.