

## Basic Information

Product Name	Anti-Cytokeratin 5/KRT5 Antibody	
Gene Name	KRT5	
Source	Rabbit	
Clonality	Polyclonal	
Isotype	IgG	
Species Reactivity	human	
Tested Application	WB, IHC	
Contents	500 ug/ml antibody with PBS, 0.02% NaN <sub>3</sub> , 1 mg/ml BSA and 50% glycerol.	
Immunogen	A synthetic peptide corresponding to a sequence in the middle region of human Cytokeratin 5, different from the related mouse sequence by one amino acid, and identical to the related rat sequence.	
Concentration	500 ug/ml	
Purification	Immunogen affinity purified.	
Observed MW	62 kDa	
Dilution Ratios	Western blot (WB): 1:500-2000 Immunohistochemistry (IHC): 1:50-400 (Boiling the paraffin sections in 10mM citrate buffer, pH6.0, or PH8.0 EDTA repair liquid for 20 mins is required for the staining of formalin/paraffin sections.) Optimal working dilutions must be determined by end user.	

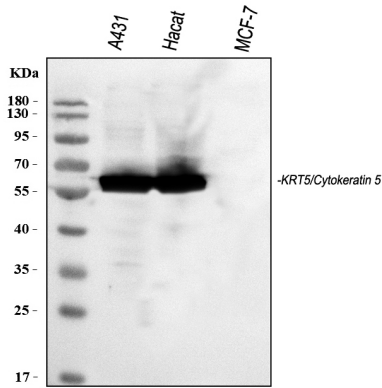
## Storage

12 months from date of receipt, -20°C as supplied.

## Background Information

Cytokeratin 5, also known as KRT5, K5, or CK5, is a protein that is encoded in humans by the KRT5 gene. The protein encoded by this gene is a member of the keratin gene family. The type II cytokeratins consist of basic or neutral proteins which are arranged in pairs of heterotypic keratin chains coexpressed during differentiation of simple and stratified epithelial tissues. This type II cytokeratin is specifically expressed in the basal layer of the epidermis with family member KRT14. Mutations in these genes have been associated with a complex of diseases termed epidermolysis bullosa simplex. The type II cytokeratins are clustered in a region of chromosome 12q12-q13.

## Selected Validation Data



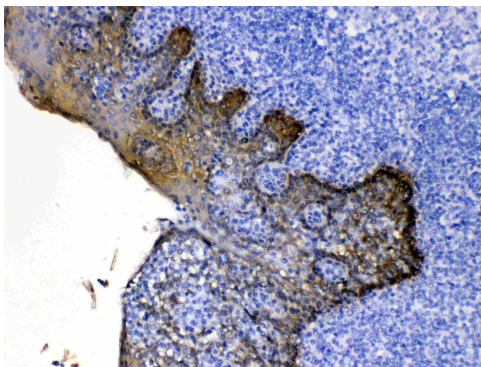
Western blot analysis of anti- KRT5 antibody (A00398). The sample well of each lane was loaded with 30ug of sample under reducing conditions.

Lane 1: human A431 whole cell lysates,

Lane 2: human Hacat whole cell lysates,

Lane 3: human MCF-7 whole cell lysates.

Use rabbit anti- KRT5 1:1000, probed with a goat anti-rabbit IgG-HRP secondary antibody. The signal is developed using an Enhanced Chemiluminescent detection (ECL) kit (Catalog#EK1002). A specific band was detected for KRT5 at approximately 62KD. The expected band size for KRT5 is at 62KD.



IHC analysis of Cytokeratin 5/KRT5 using anti-Cytokeratin 5/KRT5 antibody (A00398).

Cytokeratin 5/KRT5 was detected in a paraffin-embedded section of human tonsil tissue. Biotinylated goat anti-rabbit IgG was used as secondary antibody. The tissue section was incubated with rabbit anti-Cytokeratin 5/KRT5 Antibody (A00398) at a dilution of 1:200 and developed using Streptavidin-Biotin-Complex (SABC) (Catalog # SA1022) with DAB (Catalog # AR1027) as the chromogen.