

## Basic Information

<b>Product Name</b>	Anti-IGFBP3 Antibody
<b>Gene Name</b>	Igfbp3
<b>Source</b>	Rabbit
<b>Clonality</b>	Polyclonal
<b>Isotype</b>	IgG
<b>Species Reactivity</b>	rat
<b>Tested Application</b>	WB, ELISA
<b>Contents</b>	500 ug/ml antibody with PBS, 0.02% NaN3, 1 mg/ml BSA and 50% glycerol.
<b>Immunogen</b>	E. coli-derived rat IGFBP3 recombinant protein (Position: A29-K268).
<b>Concentration</b>	500 ug/ml
<b>Purification</b>	Immunogen affinity purified.
<b>Observed MW</b>	32 kDa
<b>Dilution Ratios</b>	Western blot (WB):1:500-2000 ELISA: 1:100-1000

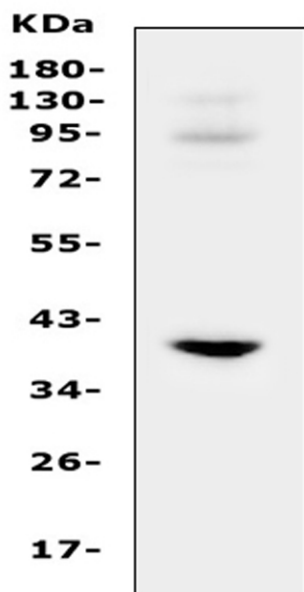
## Storage

12 months from date of receipt, -20°C as supplied.

## Background Information

IGFBP3, Insulin-like growth factor-binding protein 3, is a member of the insulin-like growth factor binding protein (IGFBP) family and encodes a protein with an IGFBP domain and a thyroglobulin type-I domain. IGFBP3 is located on chromosome 7. The protein forms a ternary complex with insulin-like growth factor acid-labile subunit (IGFALS) and either insulin-like growth factor (IGF) I or II. In this form, it circulates in the plasma, prolonging the half-life of IGFs and altering their interaction with cell surface receptors. Alternate transcriptional splice variants, encoding different isoforms, have been characterized.

## Selected Validation Data



Western blot analysis of IGFBP3 using anti-IGFBP3 antibody (A00435-3). The sample well of each lane was loaded with 30 ug of sample under reducing conditions.

Lane 1: rat heart tissue lysates.

After electrophoresis, proteins were transferred to a membrane. Then the membrane was incubated with rabbit anti-IGFBP3 antigen affinity purified polyclonal antibody (A00435-3) at a dilution of 1:1000 and probed with a goat anti-rabbit IgG-HRP secondary antibody (Catalog # BA1054). The signal is developed using ECL Plus Western Blotting Substrate (Catalog # AR1197). A specific band was detected for IGFBP3 at approximately 32 kDa. The expected band size for IGFBP3 is at 32 kDa.