

Basic Information

Product Name	Anti-Serpin C1/Antithrombin III/SERPINC1 Antibody	
Gene Name	SERPINC1	
Source	Rabbit	
Clonality	Polyclonal	
Isotype	IgG	
Species Reactivity	human, mouse, rat	
Tested Application	WB, FCM, ELISA	
Contents	500 ug/ml antibody with PBS, 0.02% NaN3, 1 mg/ml BSA and 50% glycerol.	
Immunogen	E.coli-derived human Antithrombin III/SERPINC1 recombinant protein (Position: R89-K464).	
Concentration	500 ug/ml	
Purification	Immunogen affinity purified.	
Observed MW	53 kDa	
Dilution Ratios	Western blot (WB):	1:500-2000
	Flow Cytometry (Fixed):	1:50-200
	Enzyme linked immunosorbent assay (ELISA):	1:100-1000

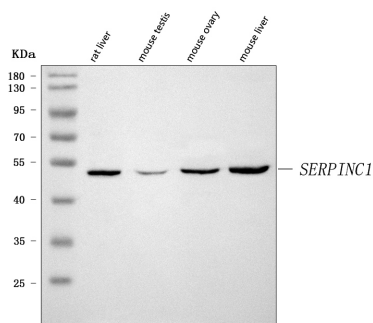
Storage

12 months from date of receipt, -20°C as supplied.

Background Information

Serpin peptidase inhibitor, clade C(antithrombin), member 1, also known as Antithrombin III(AT3) is the most important inhibitor of thrombin OMBIN III and other coagulation proteinases. This gene is mapped to 1q25.1. The protein encoded by this gene is a plasma protease inhibitor and a member of the serpin superfamily. This protein inhibits thrombin as well as other activated serine proteases of the coagulation system, and it regulates the blood coagulation cascade. The protein includes two functional domains: the heparin binding-domain at the N-terminus of the mature protein, and the reactive site domain at the C-terminus. The inhibitory activity is enhanced by the presence of heparin. More than 120 mutations have been identified for this gene, many of which are known to cause antithrombin-III deficiency.

Selected Validation Data



Western blot analysis of anti- Antithrombin III/SERPINC1 antibody (A00469-1). The sample well of each lane was loaded with 30ug of sample under reducing conditions.

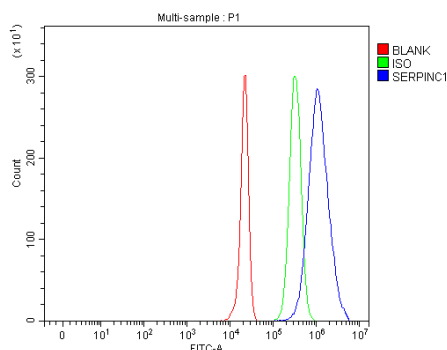
Lane 1: rat liver tissue lysates,

Lane 2: mouse testis tissue lysates,

Lane 3: mouse ovary tissue lysates,

Lane 4: mouse liver tissue lysates.

Use rabbit anti- Antithrombin III/SERPINC1 1:1000, probed with a goat anti-rabbit IgG-HRP secondary antibody. The signal is developed using an Enhanced Chemiluminescent detection (ECL) kit (Catalog#EK1002). A specific band was detected for Antithrombin III/SERPINC1 at approximately 53KD. The expected band size for Antithrombin III/SERPINC1 is at 52KD.



Flow Cytometry analysis of HepG2 cells using anti-Serpin C1/Antithrombin III/SERPINC1 antibody (A00469-1).

Overlay histogram showing HepG2 cells stained with A00469-1 (Blue line). The cells were fixed with 4% paraformaldehyde and blocked with 10% normal goat serum. And then incubated with rabbit anti-Serpin C1/Antithrombin III/SERPINC1 Antibody (A00469-1) at 1:100 dilution for 30 min at 20°C. Fluoro488 conjugated goat anti-rabbit IgG (BA1127) was used as secondary antibody at 1:100 dilution for 30 minutes at 20°C. Isotype control antibody (Green line) was rabbit IgG at 1:100 dilution used under the same conditions. Unlabelled sample without incubation with primary antibody and secondary antibody (Red line) was used as a blank control.