

Basic Information

Product Name	Anti-CXCL1 Antibody	
Gene Name	CXCL1	
Source	Rabbit	
Clonality	Polyclonal	
Isotype	IgG	
Species Reactivity	human	
Tested Application	IHC, ELISA	
Contents	500 ug/ml antibody with PBS, 0.02% NaN ₃ , 1 mg/ml BSA and 50% glycerol.	
Immunogen	E.coli-derived human CXCL1 recombinant protein (Position: A35-N107).	
Concentration	500 ug/ml	
Purification	Immunogen affinity purified.	
Dilution Ratios	Immunohistochemistry (IHC):	1:50-400
	Enzyme linked immunosorbent assay (ELISA):	1:100-1000
	(Boiling the paraffin sections in 10mM citrate buffer,pH6.0,or PH8.0 EDTA repair liquid for 20 mins is required for the staining of formalin/paraffin sections.) Optimal working dilutions must be determined by end user.	

Storage

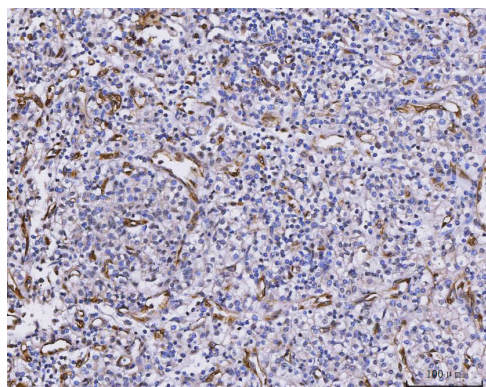
12 months from date of receipt, -20°C as supplied.

Background Information

CXCL1(Chemokine, CXC motif, Ligand 1), also called GRO1, SCYB1, GROA or MGSA, is a small cytokine belonging to the CXC chemokine family that was previously called GRO1 oncogene, GROalpha, KC, Neutrophil-activating protein 3(NAP-3) and melanoma growth stimulating activity, alpha(MSGA-alpha). In humans, this protein is encoded by the CXCL1 gene. The CXCL1 gene is mapped on 4q13.3. CXCL1 is secreted by human melanoma cells, has mitogenic properties and is implicated in melanoma pathogenesis. CXCL1 is expressed by macrophages, neutrophils and epithelial cells, and has neutrophil chemoattractant activity. CXCL1 plays a role in spinal cord development by inhibiting the migration of oligodendrocyte precursors and is involved in the processes of angiogenesis, inflammation,wound healing, and tumorigenesis. Signaling through Cxcr2, Cxcl1 inhibited oligodendrocyte precursor migration. The migrational arrest was rapid, reversible, and concentration dependent, and it reflected enhanced cell/substrate interactions. White matter

expression of Cxcl1 was temporospatially regulated. Others contribute to aggressive growth selectivity in the lung. Among the lung metastasis signature genes identified, several, including CXCL1, were functionally validated.

Selected Validation Data



IHC analysis of CXCL1 using anti-CXCL1 antibody (A00533-2). CXCL1 was detected in a paraffin-embedded section of human glioma tissue. The tissue section was developed using HRP Conjugated Rabbit IgG Super Vision Assay Kit (Catalog # SV0002) with DAB (Catalog # AR1027) as the chromogen.