

Basic Information

Product Name	Anti-CXCL1 Antibody
Gene Name	CXCL1
Source	Rabbit
Clonality	Polyclonal
Isotype	IgG
Species Reactivity	mouse, rat
Tested Application	WB, ELISA(Cap)
Contents	500 ug/ml antibody with PBS, 0.02% NaN3, 1 mg/ml BSA and 50% glycerol.
Immunogen	E. coli-derived rat GRO alpha recombinant protein (Position: A25-K96).
Concentration	500 ug/ml
Purification	Immunogen affinity purified.
Observed MW	10 kDa
Dilution Ratios	Western blot (WB):1:500-2000 ELISA(Cap): 1:50-1:200

Storage

12 months from date of receipt, -20°C as supplied.

Background Information

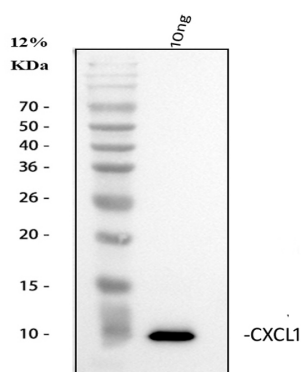
CXCL1(Chemokine, CXC motif, Ligand 1), also called GRO1, SCYB1, GROA or MGSA, is a small cytokine belonging to the CXC chemokine family that was previously called GRO1 oncogene, GRO α , KC, Neutrophil-activating protein 3 (NAP-3) and melanoma growth stimulating activity, alpha (MSG α - α). In humans, this protein is encoded by the CXCL1 gene. The CXCL1 gene is mapped on 4q13.3. CXCL1 is secreted by human melanoma cells, has mitogenic properties and is implicated in melanoma pathogenesis. It is expressed by macrophages, neutrophils and epithelial cells, and has neutrophil chemoattractant activity. CXCL1 plays a role in spinal cord development by inhibiting the migration of oligodendrocyte precursors and is involved in the processes of angiogenesis, inflammation, wound healing, and tumorigenesis. Signaling through Cxcr2, Cxcl1 inhibited oligodendrocyte precursor migration. The migrational arrest was rapid, reversible, and concentration dependent, and it reflected enhanced cell/substrate interactions. White matter expression of Cxcl1 was temporospatially regulated. Others contribute to aggressive growth selectivity in the lung.

Among the lung metastasis signature genes identified, several, including CXCL1, were functionally validated.

Reference

Anti-CXCL1 Antibody 被引用在16文献中。

Selected Validation Data



Western blot analysis of recombinant rat CXCL1

Western blot analysis of CXCL1 using anti-CXCL1 antibody (A00533).

Lane 1: recombinant rat CXCL1 protein 10 ng.

After electrophoresis, proteins were transferred to a membrane.

Then the membrane was incubated with rabbit anti-CXCL1 antigen

affinity purified polyclonal antibody (A00533) at a dilution of 1:1000

and probed with a goat anti-rabbit IgG-HRP secondary antibody

(Catalog # BA1054). The signal is developed using ECL Plus Western

Blotting Substrate (Catalog # AR1197). A specific band was detected

for CXCL1 at approximately 10 kDa.