

Basic Information

Product Name	Anti-Androgen receptor/AR Antibody		
Gene Name	AR		
Source	Rabbit		
Clonality	Polyclonal		
Isotype	IgG		
Species Reactivity	human, mouse, rat		
Tested Application	WB, FCM, ICC/IF, ELISA		
Contents	500 ug/ml antibody with PBS, 0.02% NaN3, 1 mg/ml BSA and 50% glycerol.		
Immunogen	E.coli-derived human Androgen Receptor/AR recombinant protein (Position: A629-Q920).		
Concentration	500 ug/ml		
Purification	Immunogen affinity purified.		
Observed MW	110-120 kDa		
Dilution Ratios	Western blot (WB):	1:500-2000	
	Immunocytochemistry/Immunofluorescence (ICC/IF):	1:50-400	
	Flow Cytometry (Fixed):	1:50-200	
	Enzyme linked immunosorbent assay (ELISA):	1:100-1000	

Storage

12 months from date of receipt, -20°C as supplied.

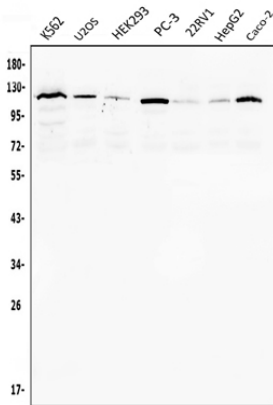
Background Information

The AR (androgen receptor) gene is more than 90 kb long and codes for a protein that has 3 major functional domains: the N-terminal domain, DNA-binding domain, and androgen-binding domain. The AR gene is mapped to Xq12. The protein functions as a steroid-hormone activated transcription factor. Upon binding the hormone ligand, the receptor dissociates from accessory proteins, translocates into the nucleus, dimerizes, and then stimulates transcription of androgen responsive genes. This gene contains 2 polymorphic trinucleotide repeat segments that encode polyglutamine and polyglycine tracts in the N-terminal transactivation domain of its protein. Expansion of the polyglutamine tract causes spinal bulbar muscular atrophy (Kennedy disease). Mutations in this gene are also associated with complete androgen insensitivity (CAIS). Two alternatively spliced variants encoding distinct isoforms have been described.

Reference

Anti-Androgen receptor/AR Antibody被引用在7文献中。

Selected Validation Data



Western blot analysis of Androgen receptor/AR using anti-Androgen receptor/AR antibody (A00542). The sample well of each lane was loaded with 30 ug of sample under reducing conditions.

Lane 1: Human K562 whole cell lysates,

Lane 2: Human U2OS whole cell lysates,

Lane 3: Human HEK293 whole cell lysates,

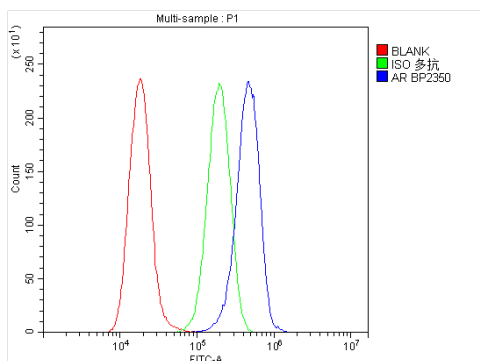
Lane 4: Human PC-3 whole cell lysates,

Lane 5: Human 22RV1 whole cell lysates,

Lane 6: Human HepG2 whole cell lysates,

Lane 7: Human CACO-2 whole cell lysates.

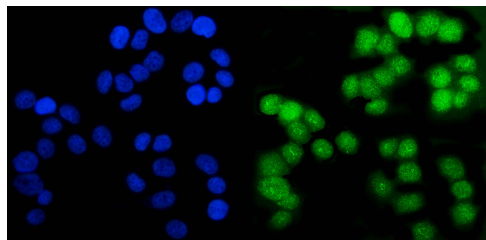
After electrophoresis, proteins were transferred to a membrane. Then the membrane was incubated with rabbit anti-Androgen receptor/AR antigen affinity purified polyclonal antibody (A00542) at a dilution of 1:1000 and probed with a goat anti-rabbit IgG-HRP secondary antibody (Catalog # BA1054). The signal is developed using ECL Plus Western Blotting Substrate (Catalog # AR1197). A specific band was detected for Androgen receptor/AR at approximately 110-120 kDa. The expected band size for Androgen receptor/AR is at 99 kDa.



Flow Cytometry analysis of A549 cells using anti-Androgen receptor/AR antibody (A00542).

Overlay histogram showing A549 cells stained with A00542 (Blue line). To facilitate intracellular staining, cells were fixed with 4% paraformaldehyde and permeabilized with permeabilization buffer. The cells were blocked with 10% normal goat serum. And then incubated with rabbit anti-Androgen receptor/AR Antibody (A00542) at 1:100 dilution for 30 min at 20°C. Fluoro488 conjugated goat anti-rabbit IgG (BA1127) was used as secondary antibody at 1:100

dilution for 30 minutes at 20°C. Isotype control antibody (Green line) was rabbit IgG at 1:100 dilution used under the same conditions. Unlabelled sample without incubation with primary antibody and secondary antibody (Red line) was used as a blank control.



ICC/IF analysis of Androgen receptor/AR using anti-Androgen receptor/AR antibody (A00542).

Androgen receptor/AR was detected in an immunocytochemical section of T-47D cells. The section was incubated with rabbit anti-Androgen receptor/AR Antibody (A00542) at a dilution of 1:100. Fluoro488 Conjugated Goat Anti-Rabbit IgG (Green) (Catalog # BA1127) was used as secondary antibody. The section was counterstained with DAPI (Catalog # AR1176) (Blue).