

Basic Information

Product Name	Anti-TIMP1 Antibody	
Gene Name	Timp1	
Source	Rabbit	
Clonality	Polyclonal	
Isotype	IgG	
Species Reactivity	mouse, rat	
Tested Application	WB, FCM, ELISA	
Contents	500 ug/ml antibody with PBS, 0.02% NaN ₃ , 1 mg/ml BSA and 50% glycerol.	
Immunogen	E. coli-derived mouse TIMP1 recombinant protein (Position: H31-N193). Mouse TIMP1 shares 86% and 73.6% amino acid (aa) sequence identity with rat and human TIMP1, respectively.	
Concentration	500 ug/ml	
Purification	Immunogen affinity purified.	
Observed MW	23-28 kDa	
Dilution Ratios	Western blot (WB):	1:500-2000
	Flow Cytometry (Fixed):	1:50-200
	Enzyme linked immunosorbent assay (ELISA):	1:100-1000

Storage

12 months from date of receipt, -20°C as supplied.

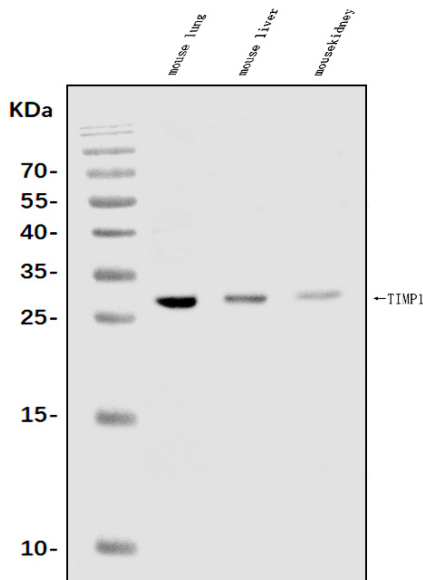
Background Information

TIMP metalloproteinase inhibitor 1, also known as TIMP1, a tissue inhibitor of metalloproteinases, is a glycoprotein that is expressed from the several tissues of organisms. This protein is a member of the TIMP family. The glycoprotein is a natural inhibitor of the matrix metalloproteinases (MMPs), a group of peptidases involved in degradation of the extracellular matrix. In addition to its inhibitory role against most of the known MMPs, the encoded protein is able to promote cell proliferation in a wide range of cell types, and may also have an anti-apoptotic function. Transcription of this gene is highly inducible in response to many cytokines and hormones. TIMP was found to be located about 22 cM proximal to OTC (300461).

Reference

Anti-TIMP1 Antibody被引用在7文献中。

Selected Validation Data



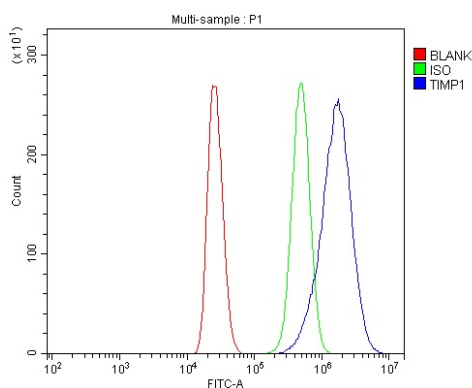
Western blot analysis of TIMP1 using anti-TIMP1 antibody (A00561-2). The sample well of each lane was loaded with 30 ug of sample under reducing conditions.

Lane 1: mouse lung tissue lysates,

Lane 2: mouse liver tissue lysates,

Lane 3: mouse kidney tissue lysates.

After electrophoresis, proteins were transferred to a membrane. Then the membrane was incubated with rabbit anti-TIMP1 antigen affinity purified polyclonal antibody (A00561-2) at a dilution of 1:1000 and probed with a goat anti-rabbit IgG-HRP secondary antibody (Catalog # BA1054). The signal is developed using ECL Plus Western Blotting Substrate (Catalog # AR1197). A specific band was detected for TIMP1 at approximately 23-28 kDa. The expected band size for TIMP1 is at 23 kDa.



Flow Cytometry analysis of Raw264.7 cells using anti-TIMP1 antibody (A00561-2).

Overlay histogram showing Raw264.7 cells stained with A00561-2 (Blue line). The cells were fixed with 4% paraformaldehyde and blocked with 10% normal goat serum. And then incubated with rabbit anti-TIMP1 Antibody (A00561-2) at 1:100 dilution for 30 min at 20°C. DyLight®488 conjugated goat anti-rabbit IgG (BA1127) was used as secondary antibody at 1:100 dilution for 30 minutes at 20°C. Isotype control antibody (Green line) was rabbit IgG at 1:100 dilution used under the same conditions. Unlabelled sample without incubation with primary antibody and secondary antibody (Red line) was used as a blank control.