

Basic Information

Product Name	Anti-Factor H/CFH Antibody	
Gene Name	CFH	
Source	Rabbit	
Clonality	Polyclonal	
Isotype	IgG	
Species Reactivity	human, mouse, rat	
Tested Application	WB, FCM, ELISA	
Contents	500 ug/ml antibody with PBS, 0.02% NaN ₃ , 1 mg/ml BSA and 50% glycerol.	
Immunogen	E.coli-derived human Factor H/CFH recombinant protein (Position: N115-A998).	
Concentration	500 ug/ml	
Purification	Immunogen affinity purified.	
Observed MW	150,180 kDa	
Dilution Ratios	Western blot (WB):	1:500-2000
	Flow Cytometry (Fixed):	1:50-200
	Enzyme linked immunosorbent assay (ELISA):	1:100-1000

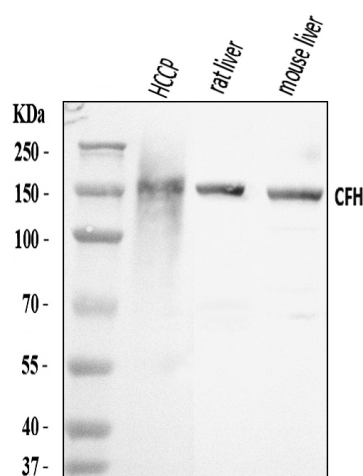
Storage

12 months from date of receipt, -20°C as supplied.

Background Information

Factor H is a member of the regulators of complement activation family and is a complement control protein. This gene is a member of the Regulator of Complement Activation (RCA) gene cluster and encodes a protein with twenty short consensus repeat (SCR) domains. This protein is secreted into the bloodstream and has an essential role in the regulation of complement activation, restricting this innate defense mechanism to microbial infections. Mutations in this gene have been associated with hemolytic-uremic syndrome (HUS) and chronic hypocomplementemic nephropathy. Alternate transcriptional splice variants, encoding different isoforms, have been characterized.

Selected Validation Data



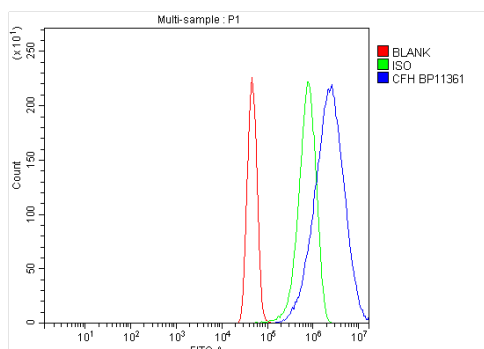
Western blot analysis of Factor H/CFH using anti-Factor H/CFH antibody (A00562-3). The sample well of each lane was loaded with 30 ug of sample under reducing conditions.

Lane 1: HCCP tissue lysates,

Lane 2: rat liver tissue lysates,

Lane 3: mouse liver tissue lysates.

After electrophoresis, proteins were transferred to a membrane. Then the membrane was incubated with rabbit anti-Factor H/CFH antigen affinity purified polyclonal antibody (A00562-3) at a dilution of 1:1000 and probed with a goat anti-rabbit IgG-HRP secondary antibody (Catalog # BA1054). The signal is developed using ECL Plus Western Blotting Substrate (Catalog # AR1197). A specific band was detected for Factor H/CFH at approximately 150,180 kDa. The expected band size for Factor H/CFH is at 139 kDa.



Flow Cytometry analysis of U251 cells using anti-Factor H/CFH antibody (A00562-3).

Overlay histogram showing U251 cells stained with A00562-3 (Blue line).

To facilitate intracellular staining, cells were fixed with 4% paraformaldehyde and permeabilized with permeabilization buffer. The cells were blocked with 10% normal goat serum. And then incubated with rabbit anti-Factor H/CFH Antibody (A00562-3) at 1:100 dilution for 30 min at 20°C. DyLight®488 conjugated goat anti-rabbit IgG (BA1127) was used as secondary antibody at 1:100 dilution for 30 minutes at 20°C. Isotype control antibody (Green line) was rabbit IgG at 1:100 dilution used under the same conditions. Unlabelled sample without incubation with primary antibody and secondary antibody (Red line) was used as a blank control.