

Basic Information

Product Name	Anti-Clusterin/CLU Antibody	
Gene Name	CLU	
Source	Rabbit	
Clonality	Polyclonal	
Isotype	IgG	
Species Reactivity	human	
Tested Application	WB, IHC, ELISA	
Contents	500 ug/ml antibody with PBS, 0.02% NaN ₃ , 1 mg/ml BSA and 50% glycerol.	
Immunogen	E.coli-derived human Clusterin/CLU recombinant protein (Position: A108-Q320).	
Concentration	500 ug/ml	
Purification	Immunogen affinity purified.	
Observed MW	42-75 kDa	
Dilution Ratios	Western blot (WB): 1:500-2000 ELISA: 1:100-1000 Immunohistochemistry (IHC): 1:50-400 (Boiling the paraffin sections in 10mM citrate buffer, pH6.0, or PH8.0 EDTA repair liquid for 20 mins is required for the staining of formalin/paraffin sections.) Optimal working dilutions must be determined by end user.	

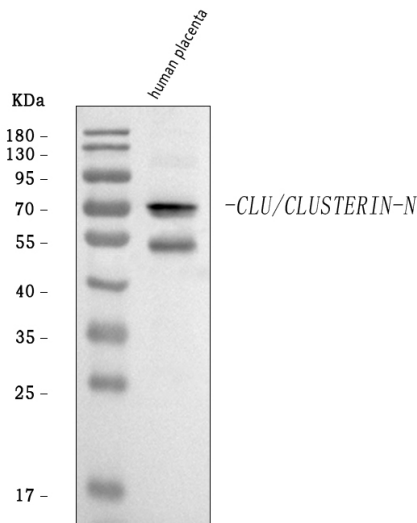
Storage

12 months from date of receipt, -20°C as supplied.

Background Information

The protein encoded by this gene is a secreted chaperone that can under some stress conditions also be found in the cell cytosol. It has been suggested to be involved in several basic biological events such as cell death, tumor progression, and neurodegenerative disorders. Alternate splicing results in both coding and non-coding variants.

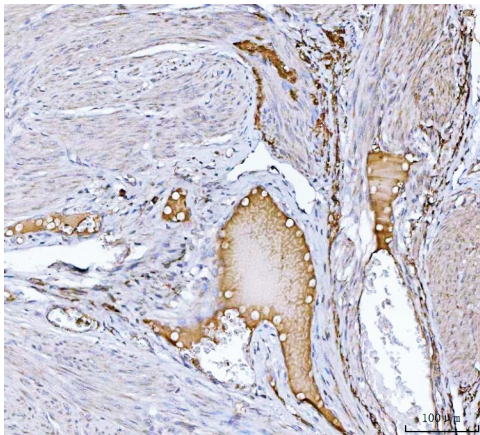
Selected Validation Data



Western blot analysis of Clusterin/CLU using anti-Clusterin/CLU antibody (A00590-3). The sample well of each lane was loaded with 30 ug of sample under reducing conditions.

Lane 1: human placenta tissue lysates.

After electrophoresis, proteins were transferred to a membrane. Then the membrane was incubated with rabbit anti-Clusterin/CLU antigen affinity purified polyclonal antibody (A00590-3) at a dilution of 1:1000 and probed with a goat anti-rabbit IgG-HRP secondary antibody (Catalog # BA1054). The signal is developed using ECL Plus Western Blotting Substrate (Catalog # AR1197). A specific band was detected for Clusterin/CLU at approximately 42-75 kDa. The expected band size for Clusterin/CLU is at 52 kDa.



IHC analysis of Clusterin/CLU using anti-Clusterin/CLU antibody (A00590-3).

Clusterin/CLU was detected in a paraffin-embedded section of human Endometrial cancer tissue. Biotinylated goat anti-rabbit IgG was used as secondary antibody. The tissue section was incubated with rabbit anti-Clusterin/CLU Antibody (A00590-3) at a dilution of 1:200 and developed using Streptavidin-Biotin-Complex (SABC) (Catalog # SA1022) with DAB (Catalog # AR1027) as the chromogen.