

Basic Information

Product Name	Anti-M-CSF/CSF1 Antibody
Gene Name	CSF1
Source	Rabbit
Clonality	Polyclonal
Isotype	IgG
Species Reactivity	human, mouse
Tested Application	WB, ELISA
Contents	500 ug/ml antibody with PBS, 0.02% NaN ₃ , 1 mg/ml BSA and 50% glycerol.
Immunogen	E. coli-derived human CSF1 recombinant protein (Position: E33-N190).
Concentration	500 ug/ml
Purification	Immunogen affinity purified.
Observed MW	60 kDa
Dilution Ratios	Western blot (WB):1:500-2000 ELISA: 1:100-1000

Storage

12 months from date of receipt, -20°C as supplied.

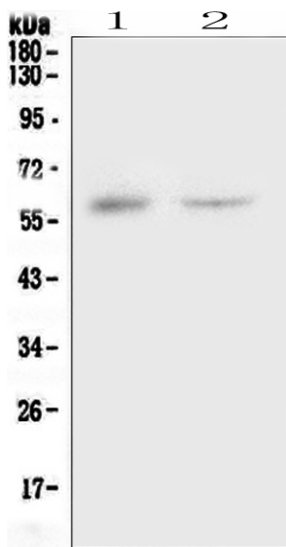
Background Information

M-CSF (or CSF-1) is a hematopoietic growth factor that is involved in the proliferation, differentiation, and survival of monocytes, macrophages, and bone marrow progenitor cells. M-CSF affects macrophages and monocytes in several ways, including stimulating increased phagocytic and chemotactic activity, and increased tumour cell cytotoxicity. The role of M-CSF is not only restricted to the monocyte/macrophage cell lineage. By interacting with its membrane receptor (CSF1R or M-CSF-R encoded by the c-fms proto-oncogene), M-CSF also modulates the proliferation of earlier hematopoietic progenitors and influence numerous physiological processes involved in immunology, metabolism, fertility and pregnancy.

Reference

Anti-M-CSF/CSF1 Antibody 被引用在2文献中。

Selected Validation Data



Western blot analysis of M-CSF/CSF1 using anti-M-CSF/CSF1 antibody (A00620-3). The sample well of each lane was loaded with 30 ug of sample under reducing conditions.

Lane 1: human placenta tissue lysates,

Lane 2: human 293T whole cell lysates.

After electrophoresis, proteins were transferred to a membrane. Then the membrane was incubated with rabbit anti-M-CSF/CSF1 antigen affinity purified polyclonal antibody (A00620-3) at a dilution of 1:1000 and probed with a goat anti-rabbit IgG-HRP secondary antibody (Catalog # BA1054). The signal is developed using ECL Plus Western Blotting Substrate (Catalog # AR1197). A specific band was detected for M-CSF/CSF1 at approximately 60 kDa. The expected band size for M-CSF/CSF1 is at 60 kDa.