

## Basic Information

Product Name	Anti-ATF6 Antibody		
Gene Name	ATF6		
Source	Rabbit		
Clonality	Polyclonal		
Isotype	IgG		
Species Reactivity	human, mouse, rat		
Tested Application	WB, ICC/IF, FCM, ELISA		
Contents	500 ug/ml antibody with PBS, 0.02% NaN <sub>3</sub> , 1 mg/ml BSA and 50% glycerol.		
Immunogen	E. coli-derived human ATF6 recombinant protein (Position: A423-Q670). Human ATF6 shares 91.9% and 93.1% amino acid (aa) sequence identity with mouse and rat ATF6, respectively.		
Concentration	500 ug/ml		
Purification	Immunogen affinity purified.		
Observed MW	90-100 kDa		
Dilution Ratios	Western blot (WB):	1:500-2000	
	Immunocytochemistry/Immunofluorescence (ICC/IF):	1:50-400	
	Flow Cytometry (Fixed):	1:50-200	
	Enzyme linked immunosorbent assay (ELISA):	1:100-1000	

## Storage

12 months from date of receipt, -20°C as supplied. 6 months 2 to 8°C after reconstitution. Avoid repeated freezing and thawing.

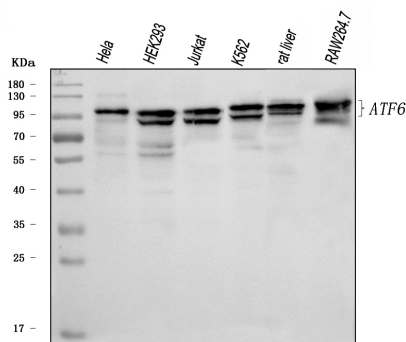
## Background Information

ATF6, a member of the leucine zipper protein family, is an endoplasmic reticulum (ER) stress-regulated transmembrane transcription factor that activates the transcription of ER molecules. This gene is mapped to chromosome 1q23.3. ATF6 can constitutively induce the promoter of glucose-regulated protein (grp) genes through activation of the endoplasmic reticulum (ER) stress element (ERSE).

## Reference

Anti-ATF6 Antibody被引用在2文献中。

## Selected Validation Data



Western blot analysis of anti- ATF6 antibody (A00655-3). The sample well of each lane was loaded with 30ug of sample under reducing conditions.

Lane 1: human HeLa whole cell lysates,

Lane 2: human HEK293 whole cell lysates,

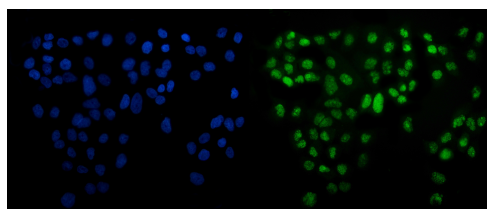
Lane 3: human Jurkat whole cell lysates,

Lane 4: human K562 whole cell lysates,

Lane 5: rat liver tissue lysates,

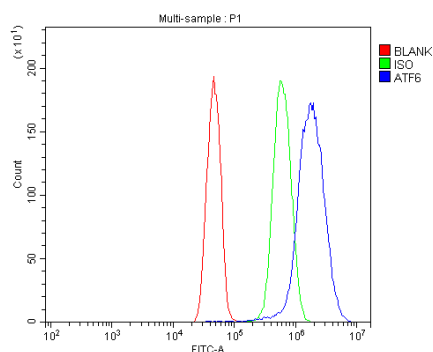
Lane 6: mouse RAW264.7 whole cell lysates.

Use rabbit anti- ATF6 1:1000, probed with a goat anti-rabbit IgG-HRP secondary antibody. The signal is developed using an Enhanced Chemiluminescent detection (ECL) kit (Catalog#EK1002). A specific band was detected for ATF6 at approximately 90-100KD. The expected band size for ATF6 is at 75KD.



IF analysis of ATF6 using anti-ATF6 antibody (A00655-3).

ATF6 was detected in an immunocytochemical section of A431 cells. The section was incubated with rabbit anti-ATF6 Antibody (A00655-3) at a dilution of 1:100. DyLight®488 Conjugated Goat Anti-Rabbit IgG (Green) (Catalog # BA1127) was used as secondary antibody. The section was counterstained with DAPI (Catalog # AR1176) (Blue).



Flow Cytometry analysis of U251 cells using anti-ATF6 antibody (A00655-3).

Overlay histogram showing U251 cells stained with A00655-3 (Blue line). To facilitate intracellular staining, cells were fixed with 4% paraformaldehyde and permeabilized with permeabilization buffer. The cells were blocked with 10% normal goat serum. And then incubated with rabbit anti-ATF6 Antibody (A00655-3) at 1:100 dilution for 30 min at 20°C. DyLight®488 conjugated goat anti-rabbit IgG (BA1127) was used as secondary antibody at 1:100 dilution for 30 minutes at 20°C. Isotype control antibody (Green line) was rabbit IgG at 1:100 dilution used under the same conditions. Unlabelled sample without incubation with primary

Product datasheet

## Anti-ATF6 Antibody

Catalog Number: **A00655-3**



antibody and ELISA experts

**BOSTER BIOLOGICAL TECHNOLOGY**

Building C21, 3rd to 5th Floors, Optics Valley Biopharmaceutical Accelerator,  
East Lake High-Tech Development Zone, Wuhan.

**Web:** [www.boster.com](http://www.boster.com) **Phone:** 027-67845390/1/2 **Email:** [boster@boster.com](mailto:boster@boster.com)

antibody and secondary antibody (Red line) was used as a blank control.