

## Basic Information

Product Name	Anti-ATF6 Antibody	
Gene Name	ATF6	
Source	Rabbit	
Clonality	Polyclonal	
Isotype	IgG	
Species Reactivity	human	
Tested Application	WB, ICC/IF, FCM, ELISA	
Contents	500 ug/ml antibody with PBS, 0.02% NaN <sub>3</sub> , 1 mg/ml BSA and 50% glycerol.	
Immunogen	E.coli-derived human ATF6 recombinant protein (Position: Q79-Q670).	
Concentration	500 ug/ml	
Purification	Immunogen affinity purified.	
Observed MW	90-100 kDa	
Dilution Ratios	Western blot (WB): 1:500-2000 Immunocytochemistry/Immunofluorescence (ICC/IF): 1:50-400 Flow Cytometry (Fixed): 1:50-200 Enzyme linked immunosorbent assay (ELISA): 1:100-1000	

## Storage

12 months from date of receipt, -20°C as supplied. 6 months 2 to 8°C after reconstitution. Avoid repeated freezing and thawing.

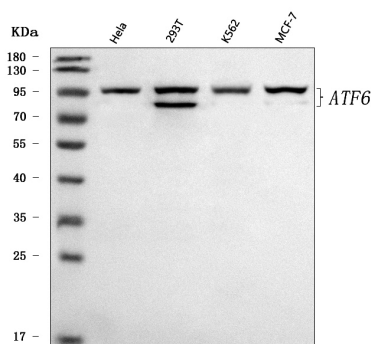
## Background Information

ATF6, a member of the leucine zipper protein family, is an endoplasmic reticulum (ER) stress-regulated transmembrane transcription factor that activates the transcription of ER molecules. This gene is mapped to chromosome 1q23.3. ATF6 can constitutively induce the promoter of glucose-regulated protein (grp) genes through activation of the endoplasmic reticulum (ER) stress element (ERSE).

## Reference

Anti-ATF6 Antibody被引用在1文献中。

## Selected Validation Data



Western blot analysis of anti- ATF6 antibody (A00655-4). The sample well of each lane was loaded with 30ug of sample under reducing conditions.

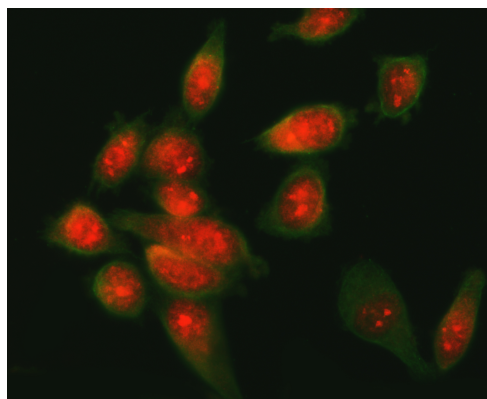
Lane 1: human Hela whole cell lysates,

Lane 2: human 293T whole cell lysates,

Lane 3: human K562 whole cell lysates,

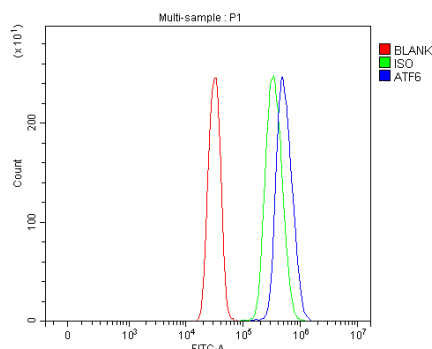
Lane 4: human MCF-7 whole cell lysates.

Use rabbit anti- ATF6 1:1000, probed with a goat anti-rabbit IgG-HRP secondary antibody. The signal is developed using an Enhanced Chemiluminescent detection (ECL) kit (Catalog#EK1002). A specific band was detected for ATF6 at approximately 90-100KD. The expected band size for ATF6 is at 75KD.



IF analysis of ATF6 using anti-ATF6 antibody (A00655-4).

ATF6 was detected in an immunocytochemical section of PC-3 cells. The section was incubated with rabbit anti-ATF6 Antibody (A00655-4) at a dilution of 1:100. Cy3-conjugated Anti-rabbit IgG Secondary Antibody (red)(Catalog#BA1032) was used as secondary antibody. The section was counterstained with DAPI (Catalog # AR1176) (Blue).



Flow Cytometry analysis of SiHa cells using anti-ATF6 antibody (A00655-4).

Overlay histogram showing SiHa cells stained with A00655-4 (Blue line). To facilitate intracellular staining, cells were fixed with 4% paraformaldehyde and permeabilized with permeabilization buffer. The cells were blocked with 10% normal goat serum. And then incubated with rabbit anti-ATF6 Antibody (A00655-4) at 1:100 dilution for 30 min at 20°C. DyLight®488 conjugated goat anti-rabbit IgG (BA1127) was used as secondary antibody at 1:100 dilution for 30 minutes at 20°C. Isotype control antibody (Green line) was rabbit IgG at 1:100 dilution used under the same conditions. Unlabelled sample without incubation with primary

Product datasheet

## Anti-ATF6 Antibody

Catalog Number: **A00655-4**



antibody and ELISA experts

**BOSTER BIOLOGICAL TECHNOLOGY**

Building C21, 3rd to 5th Floors, Optics Valley Biopharmaceutical Accelerator,  
East Lake High-Tech Development Zone, Wuhan.

**Web:** [www.boster.com](http://www.boster.com) **Phone:** 027-67845390/1/2 **Email:** [boster@boster.com](mailto:boster@boster.com)

antibody and secondary antibody (Red line) was used as a blank control.