

Basic Information

Product Name	Anti-ATF6 Antibody	
Gene Name	ATF6	
Source	Rabbit	
Clonality	Polyclonal	
Isotype	IgG	
Species Reactivity	human, mouse, rat	
Tested Application	WB, IHC	
Contents	500 ug/ml antibody with PBS, 0.02% NaN ₃ , 1 mg/ml BSA and 50% glycerol.	
Immunogen	A synthetic peptide corresponding to a sequence at the C-terminus of human ATF6, different from the related mouse and rat sequences by one amino acid.	
Concentration	500 ug/ml	
Purification	Immunogen affinity purified.	
Observed MW	90-100 kDa	
Dilution Ratios	Western blot (WB): 1:500-2000 Immunohistochemistry (IHC): 1:50-400 (Boiling the paraffin sections in 10mM citrate buffer, pH6.0, or PH8.0 EDTA repair liquid for 20 mins is required for the staining of formalin/paraffin sections.) Optimal working dilutions must be determined by end user.	

Storage

12 months from date of receipt, -20°C as supplied. 6 months 2 to 8°C after reconstitution. Avoid repeated freezing and thawing.

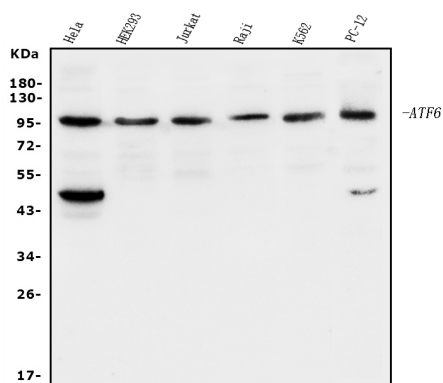
Background Information

ATF6, a member of the leucine zipper protein family, is an endoplasmic reticulum (ER) stress-regulated transmembrane transcription factor that activates the transcription of ER molecules. This gene is mapped to chromosome 1q23.3. ATF6 can constitutively induce the promoter of glucose-regulated protein (grp) genes through activation of the endoplasmic reticulum (ER) stress element (ERSE).

Reference

Anti-ATF6 Antibody被引用在4文献中。

Selected Validation Data



Western blot analysis of ATF6 using anti-ATF6 antibody (A00655).

The sample well of each lane was loaded with 30 ug of sample under reducing conditions.

Lane 1: HELA whole cell lysates,

Lane 2: HEK293 whole cell lysates,

Lane 3: Jurkat whole cell lysates,

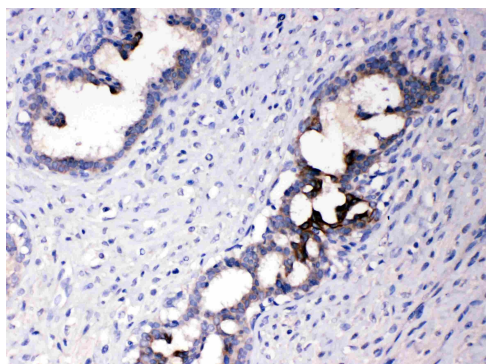
Lane 4: Raji whole cell lysates,

Lane 5: K562 whole cell lysates,

Lane 6: PC-12 whole cell lysates.

After electrophoresis, proteins were transferred to a membrane.

Then the membrane was incubated with rabbit anti-ATF6 antigen affinity purified polyclonal antibody (A00655) at a dilution of 1:1000 and probed with a goat anti-rabbit IgG-HRP secondary antibody (Catalog # BA1054). The signal is developed using ECL Plus Western Blotting Substrate (Catalog # AR1197). A specific band was detected for ATF6 at approximately 90-100 kDa. The expected band size for ATF6 is at 75 kDa.



IHC analysis of ATF6 using anti-ATF6 antibody (A00655).

ATF6 was detected in a paraffin-embedded section of human mammary cancer tissue. Biotinylated goat anti-rabbit IgG was used as secondary antibody. The tissue section was incubated with rabbit anti-ATF6 Antibody (A00655) at a dilution of 1:200 and developed using Streptavidin-Biotin-Complex (SABC) (Catalog # SA1022) with DAB (Catalog # AR1027) as the chromogen.