

Basic Information

Product Name	Anti-ASL Antibody	
Gene Name	ASL	
Source	Rabbit	
Clonality	Polyclonal	
Isotype	IgG	
Species Reactivity	mouse, rat	
Tested Application	WB, IHC	
Contents	500 ug/ml antibody with PBS, 0.02% NaN ₃ , 1 mg/ml BSA and 50% glycerol.	
Immunogen	A synthetic peptide corresponding to a sequence at the N-terminus of human Argininosuccinate Lyase/ASL, which shares 97.4% and 92.1% amino acid (aa) sequence identity with mouse and rat Argininosuccinate Lyase/ASL, respectively.	
Concentration	500 ug/ml	
Purification	Immunogen affinity purified.	
Observed MW	52 kDa	
Dilution Ratios	Western blot (WB):	1:500-2000
	Immunohistochemistry (IHC):	1:50-400
	(Boiling the paraffin sections in 10mM citrate buffer,pH6.0,or PH8.0 EDTA repair liquid for 20 mins is required for the staining of formalin/paraffin sections.) Optimal working dilutions must be determined by end user.	

Storage

12 months from date of receipt, -20°C as supplied.

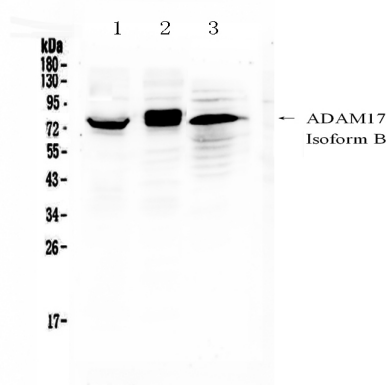
Background Information

ASL (argininosuccinatelyase, also known as argininosuccinase) is an enzyme that catalyzes the reversible breakdown of argininosuccinate (ASA) producing the amino acid arginine and dicarboxylic acid fumarate. Located in liver cytosol, ASL is the fourth enzyme of the urea cycle and involved in the biosynthesis of arginine in all species and the production of urea in ureotelic species. Mutations in ASL, resulting low activity of the enzyme, increase levels of urea in the body and result in various side effects. The ASL gene is located on chromosome 7 between the centromere (junction of the long and short arm) and the long (q) arm at position 11.2, from base pair 64,984,963 to base pair 65,002,090.

Reference

Anti-ASL Antibody被引用在2文献中。

Selected Validation Data



Western blot analysis of ASL using anti-ASL antibody (A00742-1). The sample well of each lane was loaded with 30 ug of sample under reducing conditions.

Lane 1: rat liver tissue lysates,

Lane 2: rat kidney tissue lysates,

Lane 3: rat lung tissue lysates,

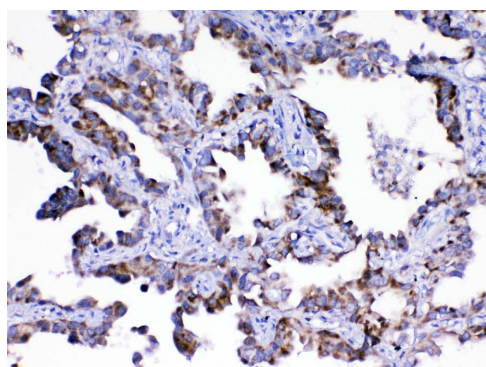
Lane 4: mouse liver tissue lysates.

After electrophoresis, proteins were transferred to a membrane.

Then the membrane was incubated with rabbit anti-ASL antigen

affinity purified polyclonal antibody (A00742-1) at a dilution of

1:1000 and probed with a goat anti-rabbit IgG-HRP secondary antibody (Catalog # BA1054). The signal is developed using ECL Plus Western Blotting Substrate (Catalog # AR1197). A specific band was detected for ASL at approximately 52 kDa. The expected band size for ASL is at 52 kDa.



IHC analysis of ASL using anti-ASL antibody (A00742-1).

ASL was detected in a paraffin-embedded section of human lung

cancer tissue. Biotinylated goat anti-rabbit IgG was used as

secondary antibody. The tissue section was incubated with rabbit

anti-ASL Antibody (A00742-1) at a dilution of 1:200 and developed

using Streptavidin-Biotin-Complex (SABC) (Catalog # SA1022) with DAB (Catalog # AR1027) as the chromogen.

Product datasheet

Anti-ASL Antibody

Catalog Number: **A00742-1**

BOSTER[®]

antibody and ELISA experts

BOSTER BIOLOGICAL TECHNOLOGY

Building C21, 3rd to 5th Floors, Optics Valley Biopharmaceutical Accelerator,
East Lake High-Tech Development Zone, Wuhan.

Web: www.boster.com **Phone:** 027-67845390/1/2 **Email:** boster@boster.com