

Basic Information

Product Name	Anti-AQP1 Antibody
Gene Name	AQP1
Source	Rabbit
Clonality	Polyclonal
Isotype	IgG
Species Reactivity	mouse, rat
Tested Application	WB
Contents	500 ug/ml antibody with PBS, 0.02% NaN ₃ , 1 mg/ml BSA and 50% glycerol.
Immunogen	A synthetic peptide corresponding to a sequence at C-terminus of human AQP1, identical to the related mouse and rat sequences.
Concentration	500 ug/ml
Purification	Immunogen affinity purified.
Observed MW	25 kDa
Dilution Ratios	Western blot (WB):1:500-2000

Storage

12 months from date of receipt, -20°C as supplied.

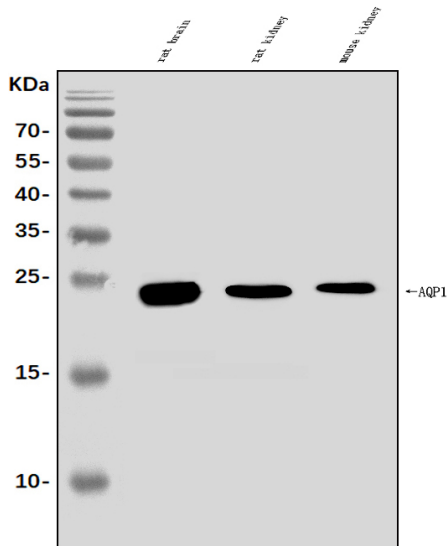
Background Information

Aquaporin 1 is a 28-kD integral protein thought at first to be a breakdown product of the Rh polypeptide but was later shown to be a unique molecule that is abundant in erythrocytes and renal tubules. AQP1 is also expressed by the choroid plexus and various other tissues. It forms a water-specific channel that provides the plasma membranes of red cells and kidney proximal tubules with high permeability to water, thereby permitting water to move in the direction of an osmotic gradient.

Reference

Anti-AQP1 Antibody被引用在3文献中。

Selected Validation Data



Western blot analysis of AQP1 using anti-AQP1 antibody (A00865).

The sample well of each lane was loaded with 30 ug of sample under reducing conditions.

Lane 1: rat brain tissue lysates,

Lane 2: rat kidney tissue lysates,

Lane 3: mouse kidney tissue lysates.

After electrophoresis, proteins were transferred to a membrane.

Then the membrane was incubated with rabbit anti-AQP1 antigen affinity purified polyclonal antibody (A00865) at a dilution of 1:1000 and probed with a goat anti-rabbit IgG-HRP secondary antibody (Catalog # BA1054). The signal is developed using ECL Plus Western Blotting Substrate (Catalog # AR1197). A specific band was detected for AQP1 at approximately 25 kDa. The expected band size for AQP1 is at 29 kDa.