

## Basic Information

<b>Product Name</b>	Anti-IGFBP1 Antibody
<b>Gene Name</b>	IGFBP1
<b>Source</b>	Rabbit
<b>Clonality</b>	Polyclonal
<b>Isotype</b>	IgG
<b>Species Reactivity</b>	human
<b>Tested Application</b>	WB, IHC
<b>Contents</b>	500 ug/ml antibody with PBS, 0.02% NaN3, 1 mg/ml BSA and 50% glycerol.
<b>Immunogen</b>	E.coli-derived human IGFBP1 recombinant protein (Position: A69-N259). Human IGFBP1 shares 67.8% and 69.3% amino acid (aa) sequence identity with mouse and rat IGFBP1, respectively.
<b>Concentration</b>	500 ug/ml
<b>Purification</b>	Immunogen affinity purified.
<b>Observed MW</b>	30 kDa
<b>Dilution Ratios</b>	Western blot (WB): 1:500-2000 Immunohistochemistry (IHC): 1:50-400 (Boiling the paraffin sections in 10mM citrate buffer,pH6.0,or PH8.0 EDTA repair liquid for 20 mins is required for the staining of formalin/paraffin sections.) Optimal working dilutions must be determined by end user.

## Storage

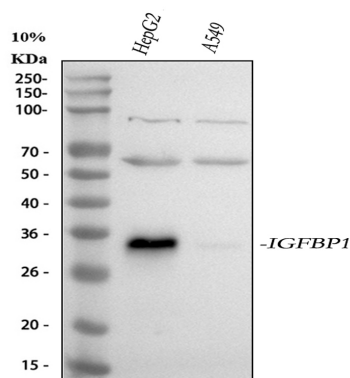
12 months from date of receipt, -20°C as supplied.

## Background Information

IGFBP1, Insulin-like growth factor-binding protein 1, also known as placental protein 12 (PP12), is a protein that in humans is encoded by the IGFBP1 gene. The IGFBP1 gene has 4 exons and spans 5.9 kb. And the IGFBP1 gene is localized to 7p13-p12 by in situ hybridization. This gene is a member of the Insulin-like growth factor-binding protein (IGFBP) family and encodes a protein with an IGFBP domain and a type-I thyroglobulin domain. The protein binds both insulin-like growth factors (IGFs) I and II and circulates in the plasma. Binding of this protein prolongs the half-life of the IGFs and alters their interaction with cell surface receptors. Alternate transcriptional splice variants, encoding different

isoforms, have been characterized.

## Selected Validation Data



Western blot analysis of IGFBP1 using anti-IGFBP1 antibody (A00922). The sample well of each lane was loaded with 30 ug of sample under reducing conditions.

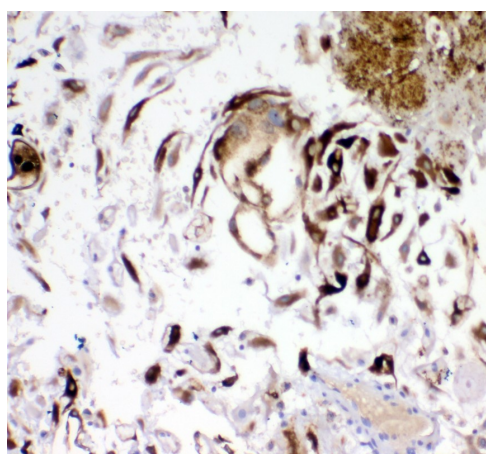
Lane 1: human HepG2 whole cell lysates,

Lane 2: human A549 whole cell lysates.

After electrophoresis, proteins were transferred to a membrane.

Then the membrane was incubated with rabbit anti-IGFBP1 antigen affinity purified polyclonal antibody (A00922) at a dilution of 1:1000 and probed with a goat anti-rabbit IgG-HRP secondary antibody (Catalog # BA1054).

The signal is developed using ECL Plus Western Blotting Substrate (Catalog # AR1197). A specific band was detected for IGFBP1 at approximately 30 kDa. The expected band size for IGFBP1 is at 28 kDa.



IHC analysis of IGFBP1 using anti-IGFBP1 antibody (A00922).

IGFBP1 was detected in a paraffin-embedded section of human placenta tissue. The tissue section was incubated with rabbit anti-IGFBP1 Antibody (A00922) at a dilution of 1:200 and developed using HRP Conjugated Rabbit IgG Super Vision Assay Kit (Catalog # SV0002) with DAB (Catalog # AR1027) as the chromogen.