

Basic Information

Product Name	Anti-ABCC2 Antibody	
Gene Name	ABCC2	
Source	Rabbit	
Clonality	Polyclonal	
Isotype	IgG	
Species Reactivity	human	
Tested Application	WB, IHC	
Contents	500 ug/ml antibody with PBS, 0.02% NaN ₃ , 1 mg/ml BSA and 50% glycerol.	
Immunogen	A synthetic peptide corresponding to a sequence in the middle region of human MRP2/ABCC2, which shares 77.1% and 71.4% amino acid (aa) sequence identity with mouse and rat MRP2/ABCC2, respectively.	
Concentration	500 ug/ml	
Purification	Immunogen affinity purified.	
Observed MW	170-250 kDa	
Dilution Ratios	Western blot (WB):	1:500-2000
	Immunohistochemistry (IHC):	1:50-400
	(Boiling the paraffin sections in 10mM citrate buffer,pH6.0,or PH8.0 EDTA repair liquid for 20 mins is required for the staining of formalin/paraffin sections.) Optimal working dilutions must be determined by end user.	

Storage

12 months from date of receipt, -20°C as supplied. 6 months 2 to 8°C after reconstitution. Avoid repeated freezing and thawing.

Background Information

Multidrug resistance-associated protein 2 (MRP2), also called canalicular multispecific organic anion transporter 1 (cMOAT) or ATP-binding cassette sub-family C member 2 (ABCC2), is a protein that in humans is encoded by the ABCC2 gene. The protein encoded by this gene is a member of the superfamily of ATP-binding cassette (ABC) transporters. ABC proteins transport various molecules across extra- and intra-cellular membranes. ABC genes are divided into seven distinct subfamilies (ABC1, MDR/TAP, MRP, ALD, OABP, GCN20, White). This protein is a member of the MRP subfamily which is involved in multi-drug resistance. This protein is expressed in the canalicular (apical) part of the hepatocyte and functions in biliary transport. Substrates include anticancer drugs such as vinblastine; therefore, this protein appears to contribute to drug resistance in mammalian cells. Several different mutations in this gene have been observed in patients with Dubin-

Johnson syndrome (DJS), an autosomal recessive disorder characterized by conjugated hyperbilirubinemia.

Reference

Anti-ABCC2 Antibody被引用在5文献中。

Selected Validation Data

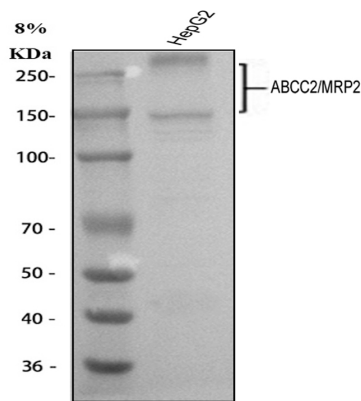


Figure 1. Western blot analysis of ABCC2 using anti-ABCC2 antibody (A00974-1). The sample well of each lane was loaded with 30 ug of sample under reducing conditions.

Lane 1: human HepG2 whole cell lysates.

After electrophoresis, proteins were transferred to a membrane.

Then the membrane was incubated with rabbit anti-ABCC2 antigen affinity purified polyclonal antibody (A00974-1) at a dilution of 1:1000 and probed with a goat anti-rabbit IgG-HRP secondary antibody (Catalog # BA1054). The signal is developed using ECL Plus Western Blotting Substrate (Catalog # AR1197). A specific band was detected for ABCC2 at approximately 170-250 kDa. The expected band size for ABCC2 is at 174 kDa.

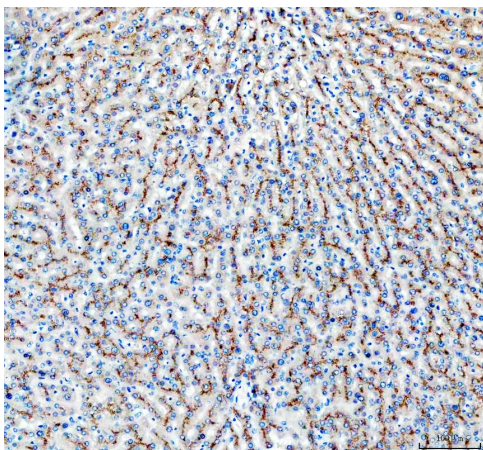


Figure 2. IHC analysis of ABCC2 using anti-ABCC2 antibody (A00974-1).

ABCC2 was detected in a paraffin-embedded section of human liver cancer tissue. The tissue section was incubated with rabbit anti-ABCC2 Antibody (A00974-1) at a dilution of 1:200 and developed using HRP Conjugated Rabbit IgG Super Vision Assay Kit (Catalog # SV0002) with DAB (Catalog # AR1027) as the chromogen.