

## Basic Information

Product Name	Anti-CD41/Integrin Alpha 2B/ITGA2B Antibody	
Gene Name	ITGA2B	
Source	Rabbit	
Clonality	Polyclonal	
Isotype	IgG	
Species Reactivity	human, rat	
Tested Application	WB, IHC, FCM, ELISA	
Contents	500 ug/ml antibody with PBS, 0.02% NaN <sub>3</sub> , 1 mg/ml BSA and 50% glycerol.	
Immunogen	E.coli-derived human CD41/Integrin Alpha 2B/ITGA2B recombinant protein (Position: A675-R714).	
Concentration	500 ug/ml	
Purification	Immunogen affinity purified.	
Observed MW	120-135 kDa	
Dilution Ratios	Western blot (WB): 1:500-2000 Immunohistochemistry (IHC): 1:50-400 Flow Cytometry (Fixed): 1:50-200 Enzyme linked immunosorbent assay (ELISA): 1:100-1000 (Boiling the paraffin sections in 10mM citrate buffer, pH6.0, or PH8.0 EDTA repair liquid for 20 mins is required for the staining of formalin/paraffin sections.) Optimal working dilutions must be determined by end user.	

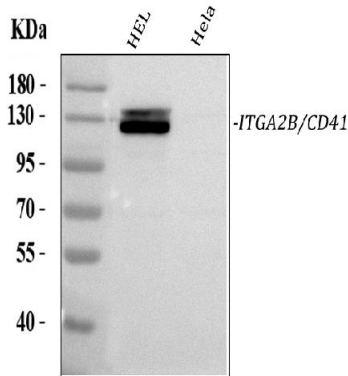
## Storage

12 months from date of receipt, -20°C as supplied.

## Background Information

Integrin alpha-IIb is a protein that in humans is encoded by the ITGA2B gene. It is mapped to 17q21.32. Integrins are heterodimeric integral membrane proteins composed of an alpha chain and a beta chain. Alpha chain 2b undergoes post-translational cleavage to yield disulfide-linked light and heavy chains that join with beta 3 to form a fibrinogen receptor expressed in platelets that plays a crucial role in coagulation. Mutations that interfere with this role result in thrombasthenia. In addition to adhesion, integrins are known to participate in cell-surface mediated signalling.

## Selected Validation Data

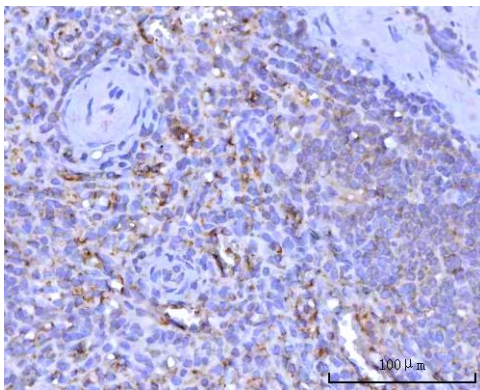


Western blot analysis of anti-CD41/Integrin antibody (A01102-1). The sample well of each lane was loaded with 30 ug of sample under reducing conditions.

Lane 1: human HEL whole cell lysates,

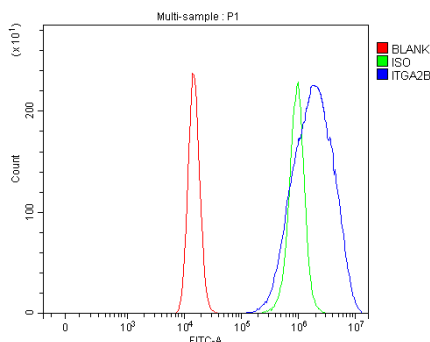
Lane 2: human Hela whole cell lysates.

After electrophoresis, proteins were transferred to a membrane. Then the membrane was incubated with rabbit anti-CD41/Integrin antigen affinity purified polyclonal antibody (A01102-1) and probed with a goat anti-rabbit IgG-HRP secondary antibody (Catalog # BA1054). The signal is developed using ECL Plus Western Blotting Substrate (Catalog # AR1197). A specific band was detected for CD41/Integrin at approximately 125 kDa. The expected band size for CD41/Integrin is at 113 kDa.



IHC analysis of CD41/Integrin using anti-CD41/Integrin antibody (A01102-1).

CD41/Integrin was detected in a paraffin-embedded section of human spleen tissue. The tissue section was developed using HRP Conjugated Rabbit IgG Super Vision Assay Kit (Catalog # SV0002) with DAB (Catalog # AR1027) as the chromogen.



Flow Cytometry analysis of HEL cells using anti-CD41/Integrin Alpha 2B/ITGA2B antibody (A01102-1).

Overlay histogram showing HEL cells stained with A01102-1 (Blue line). The cells were fixed with 4% paraformaldehyde and blocked with 10% normal goat serum. And then incubated with rabbit anti-CD41/Integrin Alpha 2B/ITGA2B Antibody (A01102-1) at 1:100 dilution for 30 min at 20°C. DyLight®488 conjugated goat anti-rabbit IgG (BA1127) was used as secondary antibody at 1:100 dilution for 30 minutes at 20°C. Isotype control antibody (Green line) was rabbit IgG at 1:100 dilution used under the same conditions. Unlabelled sample without incubation with primary antibody and secondary antibody (Red line) was used as a blank control.

Product datasheet

**Anti-CD41/Integrin Alpha 2B/ITGA2B  
Antibody**

**Catalog Number: A01102-1**



**BOSTER BIOLOGICAL TECHNOLOGY**

Building C21, 3rd to 5th Floors, Optics Valley Biopharmaceutical Accelerator,  
East Lake High-Tech Development Zone, Wuhan.

**Web:** [www.boster.com](http://www.boster.com) **Phone:** 027-67845390/1/2 **Email:** [boster@boster.com](mailto:boster@boster.com)