

Basic Information

Product Name	Anti-LHCGR Antibody
Gene Name	LHCGR
Source	Rabbit
Clonality	Polyclonal
Isotype	IgG
Species Reactivity	human
Tested Application	WB, ELISA
Contents	500 ug/ml antibody with PBS, 0.02% NaN ₃ , 1 mg/ml BSA and 50% glycerol.
Immunogen	E.coli-derived human LHCGR recombinant protein (Position: Q67-N215).
Concentration	500 ug/ml
Purification	Immunogen affinity purified.
Observed MW	78 kDa
Dilution Ratios	Western blot (WB): 1:500-2000 Enzyme linked immunosorbent assay (ELISA):1:100-1000

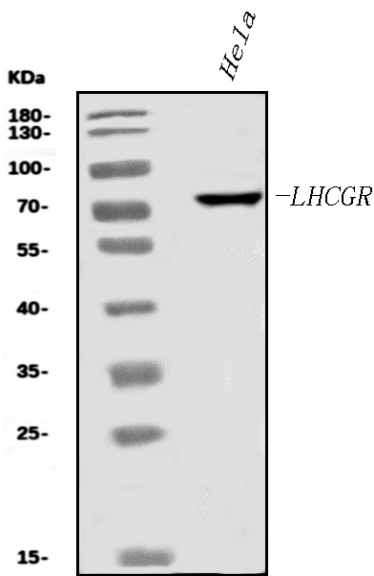
Storage

12 months from date of receipt, -20°C as supplied.

Background Information

The luteinizing hormone/choriogonadotropin receptor is a member of a subfamily of G protein-coupled receptors(GPCR) characterized by the presence of a large N-terminal extracellular domain containing several leucine-rich repeats(LRR). This glycoprotein hormone receptor family has been named the LRR-containing GPCR(LGR) family. The LHCGR gene contains 11 exons and spans approximately 80 kb and it is mapped to chromosome 2p21. In the ovary, theca, stromal, late-stage(luteinizing) granulosa, and luteal cells contain LHCGR. In the testes, Leydig cells contain LHCGR.

Selected Validation Data



Western blot analysis of LHCGR using anti-LHCGR antibody (A01120-2).

The sample well of each lane was loaded with 30 ug of sample under reducing conditions.

Lane 1: HeLa whole cell lysates.

After electrophoresis, proteins were transferred to a membrane. Then the membrane was incubated with rabbit anti-LHCGR antigen affinity purified polyclonal antibody (A01120-2) at a dilution of 1:1000 and probed with a goat anti-rabbit IgG-HRP secondary antibody (Catalog # BA1054). The signal is developed using ECL Plus Western Blotting Substrate (Catalog # AR1197). A specific band was detected for LHCGR at approximately 78 kDa. The expected band size for LHCGR is at 79 kDa.